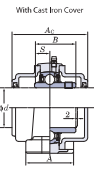
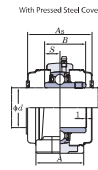
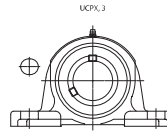
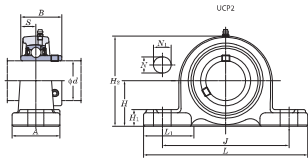


UCP
Cylindrical bore (with set screws)
d 12 ~ (45) mm



Unit: mm

Housing No.	d ₁		
P203-P210	P205-P210	P205-P210	+0.015
P211-P218	PX11-PX18	P311-P318	+0.2
P220	P319-P328		+0.3

Forms and dimensions of H₁ of P304E1 and P305E1 (Housing with cast iron cover) are shown below.

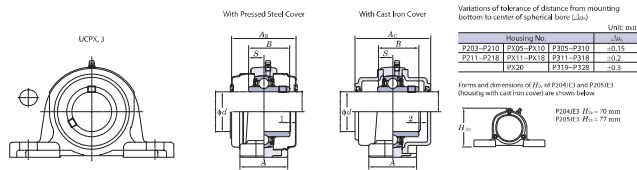
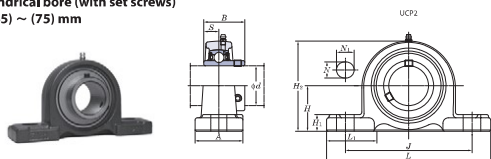
P204E3 H₁ = 70 mm
P305E3 H₁ = 77 mm

Shaft Dia. mm inch	Dimensions inch mm													Bolt Size inch mm	Unit No.	Standard Housing No.	Bearing No.	Mass kg	Basic Load Ratings kN			Factor f ₀	With Pressed Steel Cover				With Cast Iron Cover																						
	H	L	A	J	N	N ₁	H ₁	H ₂	L ₁	B	S	Mass	Open Type						One Side Closed Type	Dimension mm	inch		Mass	Open Type	One Side Closed Type	Dimension mm	inch	Mass																					
12	1 7/8	5	1 1/2	3 3/4	1/2	7/32	3/4	2 1/4	1 1/2	1.220	0.500	1/2	UCP201	P203	UC201	0.63	12.8	6.65	13.2	UCP201C	UCP201CD	45	1 3/8	0.63	—	—	—	—	—	—	—	—	—	—															
15	30.2	127	38	95	13	18	16	60	36	31	12.7	1/2	UCP201-8 UCP202-10 UCP202-10		UC201-8 UC202 UC202-10	0.63 0.61 0.61																																	
17	3/4	1 1/2	5	1 1/2	3 3/4	1/2	7/32	3/4	2 1/4	1 1/2	1.220	0.500	1/2	UCP204-12 UCP204	P204	UC204-12 UC204	0.66 0.66	12.8	6.65	13.2	UCP203C UCP203C	UCP203CD	45	1 3/8	0.60	—	—	—	—	—	—	—	—	—	—	—	—	—	—	—									
20	1 1/4	5	1 1/2	3 3/4	1/2	7/32	3/4	2 1/4	1 1/2	1.220	0.500	1/2	UCP205-14 UCP205-15 UCP205-15	P205	UC205-14 UC205-15 UC205	0.80 0.80 0.80	14.0	7.85	13.9	UCP204C UCP204C	UCP204CD	45	1 3/8	0.66	UCP204FC UCP204FCD	UCP204FCD	62	2 1/2	0.96	—	—	—	—	—	—	—	—	—	—	—	—	—							
25	1 1/4	5 1/2	1 1/2	4 1/4	1/2	7/32	3/4	2 1/4	1 1/2	1.343	0.563	3/8	UCP205-16 UCP205-16	M10	UC205-16 UC205	0.80 0.80	19.5	11.3	13.9	UCP205C UCP205C	UCP205CD	49	1 11/16	0.80	UCP205FC UCP205FCD	UCP205FCD	66	2 11/16	1.2	—	—	—	—	—	—	—	—	—	—	—	—	—	—						
	1	44.4	139	51	119	17	25	16	86	47	38.1	15.9	M14	UCX05-16 UCX05-16	PX05	UCX05-16 UCX05-16	1.5 1.5																																
1 1/4	1 1/4	6 1/2	1 1/4	4 1/4	1/2	7/32	3/4	3 3/4	1 1/2	1.500	0.626	1/2	UCP305 UCP305-16	P305	UC305 UC305-16	1.7 1.7	21.2	10.9	12.6	UCP305C UCP305C	UCP305CD	53	2 1/8	1.5	UCP305FC UCP305FCD	UCP305FCD	76	3	2.3	—	—	—	—	—	—	—	—	—	—	—	—	—	—	—	—				
	1	45	175	45	132	17	20	16	85	55	38	15	M14	UCP206-18 UCP206 UCP206-19 UCP206-20	P206	UC206-18 UC206 UC206-19 UC206-20	1.3 1.3 1.3 1.3	19.5	11.3	13.9	UCP206C UCP206C	UCP206CD	53	2 1/8	1.3	UCP206FC UCP206FCD	UCP206FCD	70	2 3/4	1.8	—	—	—	—	—	—	—	—	—	—	—	—	—	—	—	—	—		
30	1 1/4	6 3/4	2 1/4	5	1/2	7/32	3/4	3 3/4	1 1/2	1.689	0.689	1/2	UCP306 UCP306-20	PX06	UC306 UC306-20	2.1 2.1	25.7	15.4	13.9	UCP306C UCP306C	UCP306CD	60	2 3/8	2.1	—	—	—	—	—	—	—	—	—	—	—	—	—	—	—	—	—	—	—	—					
	1 1/4	47.6	175	57	127	17	25	17	93	55	42.9	17.5	M14	UCP306 UCP306-20	P306	UC306 UC306	2.2 2.2	26.7	15.0	13.3	UCP306C UCP306C	UCP306CD	82	3 1/8	2.8	—	—	—	—	—	—	—	—	—	—	—	—	—	—	—	—	—	—	—	—				
35	1 1/4	6 3/4	2 1/4	5	1/2	7/32	3/4	3 3/4	1 1/2	1.890	0.748	1/2	UCP207-20 UCP207-21 UCP207-22 UCP207-23	P207	UC207-20 UC207-21 UC207-22 UC207-23	1.6 1.6 1.6 1.6	29.1	17.8	14.0	UCP207C UCP207C	UCP207CD	60	2 3/8	1.6	UCP207FC UCP207FCD	UCP207FCD	78	3 1/8	2.3	—	—	—	—	—	—	—	—	—	—	—	—	—	—	—	—	—	—	—	—
	1 1/4	54	203	57	144	17	30	19	105	64	49.2	19	M14	UCX07-22 UCX07-23	PX07	UCX07-22 UCX07-23	2.7 2.7																																
40	1 1/2	6 3/4	2 1/4	5 1/2	1/2	7/32	3/4	4 1/4	2 1/2	1.937	0.748	1/2	UCP208-24 UCP208-25 UCP208	P208	UC208-24 UC208-25 UC208	2.0 2.0 2.0	29.1	17.8	14.0	UCP208C UCP208C	UCP208CD	69	2 3/8	2.0	UCP208FC UCP208FCD	UCP208FCD	86	3 3/8	2.8	—	—	—	—	—	—	—	—	—	—	—	—	—	—	—	—	—	—		
	1 1/2	58.7	222	67	156	20	32	21	114	71	49.2	19	M16	UCX08-24 UCX08 UCX08-24 UCX08	PX08	UCX08-24 UCX08 UCX08-24 UCX08	3.5 3.5 3.5 3.5	34.1	21.3	14.0	UCP308C UCP308C	UCP308CD	69	2 3/8	3.5	—	—	—	—	—	—	—	—	—	—	—	—	—	—	—	—	—	—	—	—	—	—		
45	1 1/2	6 3/4	2 1/4	5 1/2	1/2	7/32	3/4	4 1/4	2 1/2	1.937	0.748	1/2	UCP209-26 UCP209-27 UCP209-28 UCP209	P209	UC209-26 UC209-27 UC209-28 UC209	2.2 2.2 2.2 2.2	34.1	21.3	14.0	UCP209C UCP209C	UCP209CD	69	2 3/8	2.2	UCP209FC UCP209FCD	UCP209FCD	88	3 11/16	3.0	—	—	—	—	—	—	—	—	—	—	—	—	—	—	—	—	—	—	—	
	1 1/4	58.7	222	67	156	20	33	21	116	71	51.6	19	M16	UCX09-27 UCX09-28 UCX09	PX09	UCX09-27 UCX09-28 UCX09	3.7 3.7 3.7	35.1	23.3	14.4	UCP309C UCP309C	UCP309CD	74	2 3/8	3.7	—	—	—	—	—	—	—	—	—	—	—	—	—	—	—	—	—	—	—	—	—	—		

Remarks: 1. In Part No. of unit and units with covers, fitting codes follow bore diameter numbers. (See Table 10.5 in P.62)
 2. Part No. of applicable grease fittings are shown below.
 A-1/4-28UNF 201-210, X05-X09, 305-308
 A-1/8 211-218, X10-X20, 309-328
 3. As for the triple seal type product (from 201 to 205 are the double seal type products), suffix code L3 (or L2) follows the Part No. of unit or bearing. (Example of Part No.: UCP206L3, UC206L3)
 4. For the dimensions and forms of applicable bearings, see the dimensional tables of ball bearing for unit.
 5. Representative examples of the forms of housing are indicated.
 6. Housings of nodular graphite cast iron are also available.

Pillow Block Units

UCP
Cylindrical bore (with set screws)
d (45) ~ (75) mm



Shaft Dia. mm inch	Dimensions inch mm														Bolt Size inch mm	Unit No.	Standard Housing No.	Bearing No.	Mass kg	Basic Load Ratings kN			Factor f_0	With Pressed Steel Cover		Mass kg	With Cast Iron Cover		Mass kg																			
	H	L	A	J	N	N ₁	H ₁	H ₂	L ₁	B	S	Open Type	One Side Closed Type	Open Type						One Side Closed Type																												
45	1 7/8	2 1/2	9 1/2	2 1/4	7 1/2	19/32	1 1/4	1 1/4	3 1/4	2 1/2	2.244	0.866	1/2	UCP308-28 UCP309	P309	UC309-28 UC309	4.9 4.9	48.9	29.5	13.3	—	—	—	—	—	—	—	—	—	—	—	—	—	—	—													
50	1 15/16	2 1/4	8 1/4	2 1/8	6 1/4	19/32	7/8	1 1/4	4 7/16	2 1/2	2.031	0.748	1/2	UCP210-30 UCP210-31 UCP210	P210	UC210-30 UC210-31 UC210	2.9 2.9 2.9	35.1	23.3	14.4	—	—	—	—	—	—	—	—	—	—	—	—	—	—	—	—												
	2	2 1/8	9 1/2	2 1/8	6 3/4	19/32	1 1/4	1 1/4	3 1/4	2 1/2	2.189	0.874	1/2	UCP210-32 UCP210-33 UCP210-31	PX10	UCX10-32 UCX10-33 UCX10-31	4.6 4.6 4.6	43.4	29.4	14.4	—	—	—	—	—	—	—	—	—	—	—	—	—	—	—	—	—	—	—									
55	2 1/8	2 1/2	8 1/4	2 1/8	6 3/4	19/32	7/8	1 1/4	4 7/16	2 1/2	2.189	0.874	1/2	UCP310	P310	UC310	6.6	62.0	38.3	13.2	—	—	—	—	—	—	—	—	—	—	—	—	—	—	—	—	—	—	—									
	2 3/16	2 1/2	8 1/4	2 1/8	6 3/4	19/32	7/8	1 1/4	4 7/16	2 1/2	2.189	0.874	1/2	UCP211-32 UCP211-34 UCP211 UCP211-35	P211	UC211-32 UC211-34 UC211 UC211-35	3.6 3.6 3.6 3.6	43.4	29.4	14.4	—	—	—	—	—	—	—	—	—	—	—	—	—	—	—	—	—	—	—	—	—	—	—	—				
60	2 1/4	2 1/4	10 1/4	3 1/8	7 1/4	19/32	1 1/4	1 1/4	5 1/4	3 1/2	2.563	1.000	3/4	UCP311-35 UCP311-36	PX11	UCX11-35 UCX11-36	6.5 6.5	52.4	36.2	14.4	—	—	—	—	—	—	—	—	—	—	—	—	—	—	—	—	—	—	—	—	—	—	—					
	2 1/4	2 1/4	12 1/4	3 1/8	9 1/4	19/32	1 1/2	1 1/4	6 1/4	3 1/2	2.598	0.984	3/4	UCP311-32 UCP311 UCP311-35	P311	UC311-32 UC311 UC311-35	7.9 7.9 7.9	71.6	45.0	13.2	—	—	—	—	—	—	—	—	—	—	—	—	—	—	—	—	—	—	—	—	—	—	—	—				
65	2 1/2	2 1/4	10 1/4	3 1/8	7 1/4	19/32	1 1/4	1 1/4	5 1/4	3 1/2	2.563	1.000	3/4	UCP212-36 UCP212 UCP212-38 UCP212-39	P212	UC212-36 UC212 UC212-38 UC212-39	4.9 4.9 4.9 4.9	52.4	36.2	14.4	—	—	—	—	—	—	—	—	—	—	—	—	—	—	—	—	—	—	—	—	—	—	—	—	—	—	—	
	2 1/2	2 1/4	12 1/4	3 1/8	9 1/4	19/32	1 1/2	1 1/4	6 1/4	3 1/2	2.598	0.984	3/4	UCP212-36 UCP212 UCP212-38 UCP212-39	PX12	UCX12-36 UCX12 UCX12-38 UCX12-39	7.7 7.7 7.7 7.7	57.2	40.1	14.4	—	—	—	—	—	—	—	—	—	—	—	—	—	—	—	—	—	—	—	—	—	—	—	—	—	—	—	—
70	2 1/2	2 1/4	10 1/4	3 1/8	7 1/4	19/32	1 1/4	1 1/4	5 1/4	3 1/2	2.563	1.000	3/4	UCP312 UCP312-39	P312	UC312 UC312-39	9.5 9.5	81.9	52.2	13.2	—	—	—	—	—	—	—	—	—	—	—	—	—	—	—	—	—	—	—	—	—	—	—	—	—	—		
	2 1/2	2 1/4	12 1/4	3 1/8	9 1/4	19/32	1 1/2	1 1/4	6 1/4	3 1/2	2.598	0.984	3/4	UCP312-40 UCP213	P213	UC312-40 UC213	5.9 5.9	57.2	40.1	14.4	—	—	—	—	—	—	—	—	—	—	—	—	—	—	—	—	—	—	—	—	—	—	—	—	—	—		
75	2 3/4	2 1/2	10 1/4	3 1/8	7 1/4	19/32	1 1/4	1 1/4	5 1/4	3 1/2	2.563	1.000	3/4	UCP313-40 UCP313	PX13	UCX13-40 UCX13	8.1 8.1	62.2	44.1	14.5	—	—	—	—	—	—	—	—	—	—	—	—	—	—	—	—	—	—	—	—	—	—	—	—	—	—		
	2 3/4	2 1/2	12 1/4	3 1/8	9 1/4	19/32	1 1/2	1 1/4	6 1/4	3 1/2	2.598	0.984	3/4	UCP313-40 UCP313	P313	UCX13-40 UCX13	10.7 10.7	92.7	59.9	13.2	—	—	—	—	—	—	—	—	—	—	—	—	—	—	—	—	—	—	—	—	—	—	—	—	—	—		
80	3 1/4	2 3/4	10 1/4	3 1/8	7 1/4	19/32	1 1/4	1 1/4	5 1/4	3 1/2	2.563	1.000	3/4	UCP214-44 UCP214	P214	UC214-44 UC214	6.8 6.8	62.2	44.1	14.5	—	—	—	—	—	—	—	—	—	—	—	—	—	—	—	—	—	—	—	—	—	—	—	—	—	—		
	3 1/4	2 3/4	12 1/4	3 1/8	9 1/4	19/32	1 1/2	1 1/4	6 1/4	3 1/2	2.598	0.984	3/4	UCP214-44 UCP214	PX14	UCX14-44 UCX14	10.2 10.2	67.4	48.3	14.5	—	—	—	—	—	—	—	—	—	—	—	—	—	—	—	—	—	—	—	—	—	—	—	—	—	—	—	
85	3 1/2	3 1/4	10 1/4	3 1/8	7 1/4	19/32	1 1/4	1 1/4	5 1/4	3 1/2	2.563	1.000	3/4	UCP314-44 UCP314	P314	UC314-44 UC314	12.4 12.4	104	68.2	13.2	—	—	—	—	—	—	—	—	—	—	—	—	—	—	—	—	—	—	—	—	—	—	—	—	—	—		
	3 1/2	3 1/4	12 1/4	3 1/8	9 1/4	19/32	1 1/2	1 1/4	6 1/4	3 1/2	2.598	0.984	3/4	UCP314-44 UCP314	PX14	UCX14-44 UCX14	14.7 14.7	104	68.2	13.2	—	—	—	—	—	—	—	—	—	—	—	—	—	—	—	—	—	—	—	—	—	—	—	—	—	—		
90	3 3/4	3 1/2	10 1/4	3 1/8	7 1/4	19/32	1 1/4	1 1/4	5 1/4	3 1/2	2.563	1.000	3/4	UCP215-47 UCP215 UCP215-48	P215	UC215-47 UC215 UC215-48	7.4 7.4 7.4	67.4	48.3	14.5	—	—	—	—	—	—	—	—	—	—	—	—	—	—	—	—	—	—	—	—	—	—	—	—	—	—	—	—
	3 3/4	3 1/2	12 1/4	3 1/8	9 1/4	19/32	1 1/2	1 1/4	6 1/4	3 1/2	2.598	0.984	3/4	UCP215-47 UCP215 UCP215-48	PX15	UCX15-47 UCX15 UCX15-48	10.8 10.8 10.8	72.7	53.0	14.6	—	—	—	—	—	—	—	—	—	—	—	—	—	—	—	—	—	—	—	—	—	—	—	—	—	—	—	—

Remarks 1. In Part No. of unit and units with covers, fitting codes follow bore diameter numbers. (See Table 10.5 in P.62)
 2. Part No. of applicable grease fittings are shown below.
 A-1/4-28UNF 201~210, X05~X09, 305~308
 A-R1/8 211~218, X10~X20, 309~328
 3. As for the triple seal type product (from 201 to 205 are the double seal type products), suffix code L2 (or L3) follows the Part No. of unit or bearing.
 (Example of Part No.: UCP206L3, UC206L3)
 4. For the dimensions and forms of applicable bearings, see the dimensional tables of ball bearing for unit.
 5. Representative examples of the forms of housing are indicated.
 6. Housings of nodular graphite cast iron are also available.

Pillow Block Units

UCP Cylindrical bore (with set screws) d (75) ~ 140 mm

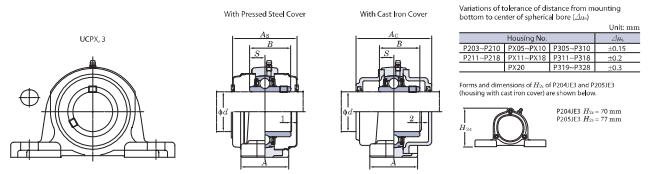
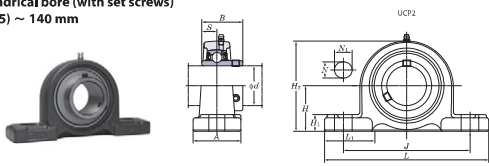


Table with 15 columns: Shaft Dia., Dimensions, Bolt Size, Unit No., Housing No., Bearing No., Mass, Basic Load Ratings, Factor, and With Pressed Steel Cover/With Cast Iron Cover. Rows are categorized by shaft diameter (75, 80, 85, 90, 95, 100, 105, 110, 120, 130, 140).

Remarks 1. In Part No. of unit and units with covers, fitting codes follow bore diameter numbers. (See Table 10.5 in P62.)
2. Part No. of applicable grease fittings are shown below.
A-1/A-2&LNF 201-210, X05-X09, 305-308
A-R1/R 211-218, X10-X20, 309-328
3. As for the triple seal type product from 201 to 205 are the double seal type products, suffix code L3 (or L2) follows the Part No. of unit or bearing.
(Example of Part No. UCP266L3, UC206L3.)
4. For the dimensions and forms of applicable bearings, see the dimensional tables of ball bearing for unit.
5. Representative examples of the forms of housing are indicated.
6. Housings of nodular graphite cast iron are also available.