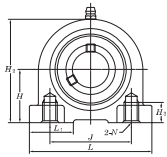
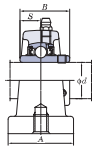


Tapped-Base Pillow Block Units

UCPA
Cylindrical bore (with set screws)
d 12 ~ 50 mm



Variances of tolerance of distance from mounting bottom to center of spherical bore (L₂) and variances of tolerance of distance between centers of bore holes (L₂)

Housing No.	L ₂	L ₂
PA204-PA210	±0.15	±0.5

Unit: mm

Shaft Dia. mm inch	Dimensions inch mm										Unit No.	Housing No.	Bearing No.	Basic Load Ratings			Factor	Mass
	H	L	A	J	N	H ₂	H ₁	L ₁	B	S				C _r	C ₀	f ₀		
12 1/2											UCPA201 UCPA201-8	PA204	UC201 UC201-8				0.64	
15 3/8	1 1/16	3	1 1/16	2 3/16	M10x1.5	2 3/16	1/2	1 1/16	1.220	0.500	UCPA202 UCPA202-10		UC202 UC202-10				0.62	
17 7/8	30.2	76	40	52	M10x1.5	60	13	27	31	12.7	UCPA203 UCPA204-12 UCPA204		UC203 UC204-12 UC204				0.61	
20 3/4											UCPA205-14 UCPA205-15 UCPA205	PA205	UC205-14 UC205-15 UC205				0.59	
25 1	1 7/16	3 3/16	1 7/16	2 13/16	M10x1.5	2 33/32	1/2	1 7/16	1.343	0.563	UCPA206-18 UCPA206-19 UCPA206		UC206-18 UC206-19 UC206				0.83	
30 1 1/8	42.9	94	50	66	M14x2	84	18	36	38.1	15.9	UCPA207-20 UCPA207-21 UCPA207		UC207-20 UC207-21 UC207				1.2	
35 1 1/4											UCPA207-22 UCPA207-23	PA207	UC207-22 UC207-23				1.7	
40 1 1/2	47.6	110	55	80	M14x2	93	20	41	42.9	17.5	UCPA208-24 UCPA208-25 UCPA208		UC208-24 UC208-25 UC208				2.0	
45 1 3/8	49.2	116	58	84	M14x2	98	20	41	49.2	19	UCPA209-26 UCPA209-27 UCPA209		UC209-26 UC209-27 UC209				2.2	
50 2											UCPA210-30 UCPA210-31 UCPA210 UCPA210-32	PA210	UC210-30 UC210-31 UC210 UC210-32				2.8	
	2 1/4	5 1/4	2 13/16	3 3/16	M16x2	4 7/16	3 1/2	1 7/8	2.031	0.748								
	57.2	130	64	94	M16x2	113	25	47	51.6	19								

Remarks 1. In Part No. of unit, fitting codes follow bore diameter codes. (See Table 10.5 in P.62.)
 2. Part No. of the applicable grease fitting is A-1/4-28UNF.
 3. As for the triple seal type product (from 201 to 205 are the double seal type products), suffix code L3 (or L2) follows Part No. of unit or bearing. (Example of Part No.: UCPA206L3, UC206L3)

4. As for the dimensions and forms of applicable bearings, see the dimensional tables of ball bearing for unit.
 5. Tapered bore (with adapter) type products are also available. (Example of Part No.: UKPA205J + H2305X, UK205 + H2305X)
 6. Housings of nodular graphite cast iron are also available.