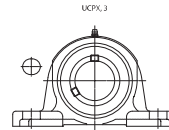
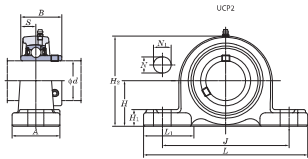
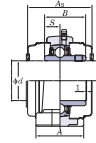


Pillow Block Units

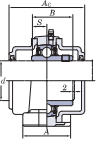
UCP  
Cylindrical bore (with set screws)  
d 12 ~ (45) mm



With Pressed Steel Cover



With Cast Iron Cover



Variances of tolerance of distance from mounting bottom to center of spherical bore (L2)

Housing No.	L2	Unit: mm
P203-P210	P105-P112	±0.15
P211-P218	P111-P118	±0.2
P220	P119-P128	±0.3

Forms and dimensions of H<sub>1</sub> of P304E1 and P305E1 (Housing with cast iron cover) are shown below.



Shaft Dia. mm inch	Dimensions inch mm													Bolt Size inch mm	Unit No.	Standard Housing No.	Bearing No.	Mass kg	Basic Load Ratings kN			Factor f <sub>0</sub>	With Pressed Steel Cover			With Cast Iron Cover						
	H	L	A	J	N	N <sub>1</sub>	H <sub>1</sub>	H <sub>2</sub>	L <sub>1</sub>	B	S	Mass	C <sub>r</sub>						C <sub>0</sub>	C <sub>10</sub>	Open Type		One Side Closed Type	Dimension mm	inch	Mass	Open Type	One Side Closed Type	Dimension mm	inch	Mass	
12	1 7/8	5	1 1/2	3 3/4	1/2	3/32	3/4	2 1/8	1 1/2	1.220	0.500	1/2	UCP201	P203	UC201	0.63	12.8	6.65	13.2	1.3	UCP201C	UCP201CD	45	1 3/32	0.63	—	—	—	—	—	—	
15	30.2	127	38	95	13	18	16	60	36	31	12.7	M10	UCP201-8 UCP201-10 UCP202-10 UCP202-10	P203	UC201-8 UC202 UC202-10 UC203	0.63 0.61 0.61 0.60	12.8	6.65	13.2	1.3	UCP202C UCP203C	UCP202CD UCP203CD	45	1 3/32	0.61	—	—	—	—	—	—	—
17	33.3	127	38	95	13	18	16	65	36	31	12.7	M10	UCP204-12 UCP204	P204	UC204-12 UC204	0.66 0.66	12.8	6.65	13.2	1.3	UCP204C	UCP204CD	45	1 3/32	0.66	—	—	—	—	—	—	
20	36.5	140	38	105	13	18	16	70	38	34.1	14.3	M10	UCP205-14 UCP205-15 UCP205 UCP205-16 UCP205-16	P205	UC205-14 UC205-15 UC205 UC205-16 UC205-16	0.80 0.80 0.80 0.80 0.80	14.0	7.85	13.9	1.3	UCP205C	UCP205CD	49	1 9/16	0.80	—	—	—	—	—	—	—
25	44.4	159	51	119	17	25	16	86	47	38.1	15.9	M14	UCP305 UCP305-16 UCP305-16	PX05	UC305 UC305-16 UC305-16	1.5 1.7 1.7	19.5	11.3	13.9	1.3	UCP305C	UCP305CD	53	2 1/16	1.5	—	—	—	—	—	—	—
30	47.6	175	57	127	17	25	17	93	55	42.9	17.5	M14	UCP206 UCP206-18 UCP206-19 UCP206-20	P206	UC206 UC206-18 UC206-19 UC206-20	1.3 1.3 1.3 1.3	19.5	11.3	13.9	1.3	UCP206C	UCP206CD	53	2 1/16	1.3	—	—	—	—	—	—	—
35	47.6	175	57	127	17	25	17	93	55	42.9	17.5	M14	UCP306 UCP306-20	PX06	UC306 UC306-20	2.1 2.1	25.7	15.4	13.9	1.3	UCP306C	UCP306CD	60	2 3/8	2.1	—	—	—	—	—	—	—
40	50	180	60	140	17	20	17	95	53	43	17	M14	UCP207-20 UCP207-21 UCP207-22 UCP207-23	P207	UC207-20 UC207-21 UC207-22 UC207-23	1.6 1.6 1.6 1.6	21.2	10.9	12.6	1.3	UCP207C	UCP207CD	60	2 3/8	1.6	—	—	—	—	—	—	—
45	54	203	57	144	17	30	19	105	64	49.2	19	M14	UCP307 UCP307-23	PX07	UC307 UC307-23	2.7 2.7	29.1	17.8	14.0	1.4	UCP307C	UCP307CD	69	2 7/16	2.7	—	—	—	—	—	—	—
50	58.7	222	67	156	20	32	21	114	71	49.2	19	M16	UCP208-24 UCP208-25 UCP208	P208	UC208-24 UC208-25 UC208	2.0 2.0 2.0	29.1	17.8	14.0	1.4	UCP208C	UCP208CD	69	2 7/16	2.0	—	—	—	—	—	—	
55	60	220	60	170	17	27	19	118	65	52	19	M14	UCP308-24 UCP308	PX08	UC308-24 UC308	3.5 3.5	34.1	21.3	14.0	1.4	UCP308C	UCP308CD	69	2 7/16	3.5	—	—	—	—	—	—	
60	60	220	60	170	17	27	19	118	65	52	19	M14	UCP209-26 UCP209-27 UCP209-28 UCP209	P209	UC209-26 UC209-27 UC209-28 UC209	2.2 2.2 2.2 2.2	34.1	21.3	14.0	1.4	UCP209C	UCP209CD	69	2 7/16	2.2	—	—	—	—	—	—	
65	58.7	222	67	156	20	33	21	116	71	51.6	19	M16	UCP309-27 UCP309-28 UCP309	PX09	UC309-27 UC309-28 UC309	3.7 3.7 3.7	35.1	23.3	14.4	1.4	UCP309C	UCP309CD	74	2 7/16	3.7	—	—	—	—	—	—	

Remarks: 1. In Part No. of unit and units with covers, fitting codes follow bore diameter numbers. (See Table 10.5 in P.62)  
 2. Part No. of applicable grease fittings are shown below.  
 A-1/4-28UNF ..... 201-210, X05-X09, 305-308  
 A-1/8 ..... 211-218, X10-X20, 309-328  
 3. As for the triple seal type product (from 201 to 205 are the double seal type products), suffix code L3 (or L2) follows the Part No. of unit or bearing. (Example of Part No.: UCP206L3, UC206L3)  
 4. For the dimensions and forms of applicable bearings, see the dimensional tables of ball bearing for unit.  
 5. Representative examples of the forms of housing are indicated.  
 6. Housings of nodular graphite cast iron are also available.



