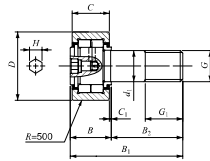


IKO Cylindrical Roller Cam Followers Full Complement Type/With Hexagon Hole

Selectable product specifications

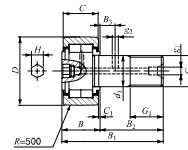
Material	No symbol	Carbon steel
	F	Stainless steel
Roller guide type	No symbol	Caged
Seal structure	No symbol	Full complement
	UU	Sealed type
Shape of outer ring	No symbol	Cylindrical outer ring
	R	Crowned outer ring



Stud dia d_1 10mm

Stud dia. mm	Identification number	Mass (Ref.) g	Boundary dimensions mm							
			D	C	d_1	G	G_1	B max	B_1 max	B_2
10	NUCF 10 BR	44	22	12	10	M10 × 1,25	12	13,2	36,2	23
	NUCF 10-1 BR	58	26	12	10	M10 × 1,25	12	13,2	36,2	23
12	NUCF 12 BR	86	30	14	12	M12 × 1,5	13	15,2	40,2	25
	NUCF 12-1 BR	97	32	14	12	M12 × 1,5	13	15,2	40,2	25
16	NUCF 16 BR	167	35	18	16	M16 × 1,5	17	19,6	52,1	32,5
	NUCF 16-1 BR	244	40	20	18	M18 × 1,5	19	21,6	58,1	36,5
20	NUCF 20 BR	457	52	24	20	M20 × 1,5	21	25,6	66,1	40,5
	NUCF 20-1 BR	384	47	24	20	M20 × 1,5	21	25,6	66,1	40,5
24	NUCF 24 BR	789	62	29	24	M24 × 1,5	25	30,6	80,1	49,5
	NUCF 24-1 BR	1 020	72	29	24	M24 × 1,5	25	30,6	80,1	49,5
30	NUCF 30 BR	1 600	80	35	30	M30 × 1,5	32	37	100	63
	NUCF 30-2 BR	1 970	90	35	30	M30 × 1,5	32	37	100	63

Remarks 1. Model with a stud diameter d_1 of 10 mm is provided with an oil hole (re-greasing fitting) on the stud head only. Other models are provided with one oil hole each on the head, outside surface and end surface of the stud.
 2. Provided with prepacked grease.
 3. A nut is supplied with the stud.



Stud dia d_1 12 to 30mm

B_3	C_1	g_1	g_2	H	Mounting dimension f Min. mm	Maximum tightening torque N·m	Basic dynamic load rating C N	Basic static load rating C_0 N	Maximum allowable static load N
6	0,6	4	3	6	17	21,9	14 000	13 400	5 650
6	0,6	4	3	6	17	21,9	14 000	13 400	9 040
8	0,8	4	3	6	20	58,5	23 400	27 300	11 800
8	0,8	6	3	8	22	86,2	25 200	30 900	20 300
9	0,8	6	4	8	31	119	43 100	58 100	30 000
9	0,8	6	4	8	27	119	38 900	49 000	27 200
11	0,8	6	4	12	38	215	58 200	75 300	35 200
11	0,8	6	4	12	44	215	63 900	88 800	57 000
15	1	6	4	17	45	438	90 300	121 000	98 300
15	1	6	4	17	45	438	90 300	121 000	98 300