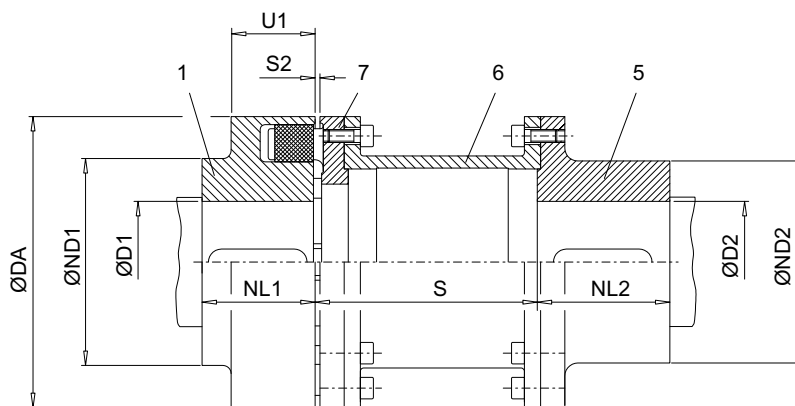


A.1.1 Type H



- 1 Coupling part 1
- 5 Coupling part 5
- 6 Coupling part 6
- 7 Coupling part 7

Figure A-1 Type H

Table A-1 Speeds, geometry data and weights of type H

Size	Speed n_{max} rpm	Maximum bore ¹⁾		DA	ND1	ND2	NL1	NL2	S2 +1	S +1	U1	Weight ²⁾ m kg
		D1 mm	D2 mm									
80	7 200	38	38	80	80	55	30	45	5	100	30	2.4
										140		2.5
95	6 600	48	48	95	76	70	35	45	5	100	30	3.3
										140		3.6
110	6 300	55	55	110	86	80	40	50	5	100	34	4.8
								50		140		5.0
								60		180		5.6
125	6 100	60	60	125	100	90	50	50	5	100	36	6.9
								50		140		7.4
								60		180		7.8
								70		200		8.1
								80		250		8.6
140	5 800	65	65	140	100	100	55	65	5	100	34	9.6
								65		140		10.1
								65		180		10.6
								65		200		10.9
								80		250		11.5

Size	Speed n _{max.} rpm	Maximum bore ¹⁾		DA	ND1	ND2	NL1	NL2	S2 +1	S +1	U1	Weight ²⁾ m kg
		D1	D2									
		mm	mm									
160	5 100	70	70	160	108	108	60	70	6	100	39	12.5
								70		140		13
								70		180		14
								70		200		14
								80		250		15
180	4 500	80	80	180	125	125	70	80	6	140	42	18
										180		19
										200		20
										250		21
200	4 000	85	90	200	140	140	80	90	6	140	47	25
										180		26
										200		27
										250		28
225	3 600	90	95	225	150	150	90	100	6	140	52	33
										180		34
										200		35
										250		37
250	3 300	100	100	250	165	165	100	110	8	180	60	48
										200		50
										250		52
280	3 000	110	130	280	180	180	110	120	8	250	65	67
315	2 600	100	140	315	165	200	125	140	8	250	70	94
		120	200		96							
350	2 400	110	160	350	180	230	140	150	8	250	74	115
		140	230		120							
400	2 000	120	180	400	200	250	160	180	8	250	78	185
		150	250		190							
440	1 900	130	190	440	215	265	180	180	10	250	86	214
		160	265		219							

¹⁾ Maximum bore for parallel keyway in accordance with DIN 6885/1.

²⁾ Weight applies to one coupling with maximum bore.