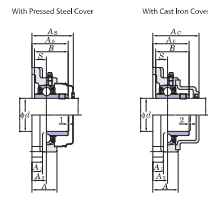
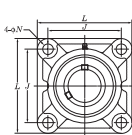
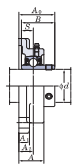




4-Bolt Flange Units

UCF  
Cylindrical bore (with set screws)  
d (45) ~ (75) mm



Variances of tolerance of distance from mounting surface to center of spherical bore (L1, L2) and tolerance of position of bolt hole (X)

Housing No.	Unit No.	Unit
F204-F210	F305-F310	±0.5
F211-F218	F311-F318	±0.8
		Unit: mm

Variances of tolerance of both bore diameter (L, L<sub>0</sub>)

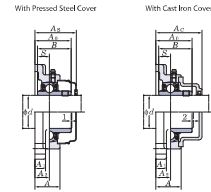
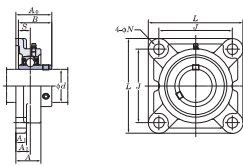
Housing No.	Unit No.	Unit
F204-F218	F305-F318	±0.2
F320	F316-F318	±0.3
		Unit: mm

Shaft Dia. mm	inch	Dimensions										Bolt Size	Standard Unit No.	Housing No.	Bearing No.	Mass	Basic Load Ratings	Factor	With Pressed Steel Cover		Mass	With Cast Iron Cover		Mass							
		L	A	J	N	A <sub>1</sub>	A <sub>2</sub>	A <sub>3</sub>	B	S	kg								C <sub>0</sub>	C <sub>10</sub>		f <sub>0</sub>	Open Type		Closed Type	Dimension	mm	inch	kg		
45	1 7/8	6 5/16	1 1/2	4 7/16	1/4	1/2	1/2	2 1/8	2.244	0.866	1/2	UCF309-28 UCF309	F309	UC309-28 UC309	4.0	48.9	29.5	13.3	—	—	—	—	—	—	—	UCF309C	UCF309D	76	3	4.6	
50	1 15/16	5 1/8	1 1/4	4 3/8	1/4	1/2	2 1/4	2.031	0.748	1/2	UCF210-30 UCF210-31 UCF210-32	F210	UC210-30 UC210-31 UC210-32	2.5	35.1	23.3	14.4	UCF210C	UCF210D	59	2 1/16	2.5	—	—	—	—	—	—	—		
	2	143	40	111	16	16	22	54.6	51.6	19	M14	UCF210-33 UCF210-34 UCF210-35	F210	UC210-33 UC210-34 UC210-35	2.5	—	—	—	—	—	—	—	—	—	—	—	—	—	—	—	
50	1 15/16	6 1/8	1 1/2	5 1/8	1/4	1/2	2 1/2	2.189	0.874	1/2	UCF310 UCF310-32	F310	UC310 UC310-32	3.7	43.4	29.4	14.4	UCF310C	UCF310D	64	2 1/16	3.7	—	—	—	—	—	—	—	—	
	2	162	44	130	19	20	26	59.4	55.6	22.2	M16	UCF310-33 UCF310-34 UCF310-35	F310	UC310-33 UC310-34 UC310-35	3.7	—	—	—	—	—	—	—	—	—	—	—	—	—	—	—	
55	2 1/8	6 7/8	1 1/2	5 1/8	1/4	1/2	2 3/4	2.189	0.874	1/2	UCF211 UCF211-34 UCF211-35	F211	UC211 UC211-34 UC211-35	3.4	43.4	29.4	14.4	UCF211C	UCF211D	63	2 1/16	3.4	—	—	—	—	—	—	—	—	
	2 1/8	162	43	130	19	18	25	58.4	55.6	22.2	M16	UCF211-36 UCF211-37	F211	UC211-36 UC211-37	3.4	—	—	—	—	—	—	—	—	—	—	—	—	—	—	—	
55	2 1/8	6 7/8	1 1/2	5 1/8	1/4	1/2	2 3/4	2.563	1.000	1/2	UCF11 UCF11-35 UCF11-36	F11	UC11 UC11-35 UC11-36	4.9	52.4	36.2	14.4	UCF11C	UCF11D	73.5	2 7/16	4.9	—	—	—	—	—	—	—	—	
	2 1/8	175	49	143	19	20	29	68.7	65.1	25.4	M16	UCF11-37 UCF11-38 UCF11-39	F11	UC11-37 UC11-38 UC11-39	5.6	71.6	45.0	13.2	—	—	—	—	—	—	—	—	—	—	—	—	
60	2 1/8	7 1/4	2 1/4	5 1/4	1/4	1/2	3 1/4	2.598	0.984	1/2	UCF212 UCF212-38 UCF212-39	F212	UC212 UC212-38 UC212-39	4.2	52.4	36.2	14.4	UCF212C	UCF212D	73.5	2 7/16	4.2	—	—	—	—	—	—	—	—	
	2 1/8	187	59	149	19	21	34	73.7	65.1	25.4	M16	UCF212-40 UCF212-41 UCF212-42	F212	UC212-40 UC212-41 UC212-42	4.2	—	—	—	—	—	—	—	—	—	—	—	—	—	—	—	
65	2 1/2	7 1/4	2 1/4	5 1/4	1/4	1/2	3 1/4	2.937	1.189	1/2	UCF312 UCF312-39 UCF312-40	F312	UC312 UC312-39 UC312-40	6.9	57.2	40.1	14.4	UCF312C	UCF312D	78.5	3 1/16	5.7	—	—	—	—	—	—	—	—	
	2 1/2	195	56	150	23	22	33	78	71	26	M20	UCF312-41 UCF312-42 UCF312-43	F312	UC312-41 UC312-42 UC312-43	6.9	81.9	52.2	13.2	—	—	—	—	—	—	—	—	—	—	—	—	—
70	2 7/8	7 1/4	2 1/4	5 1/4	1/4	1/2	3 1/4	3.063	1.311	1/2	UCF13 UCF13-40 UCF13-41	F13	UC13 UC13-40 UC13-41	7.8	57.2	40.1	14.4	UCF13C	UCF13D	74.5	2 1/16	5.2	—	—	—	—	—	—	—	—	
	2 7/8	187	59	149	19	22	30	69.7	65.1	25.4	M16	UCF13-42 UCF13-43 UCF13-44	F13	UC13-42 UC13-43 UC13-44	7.8	—	—	—	—	—	—	—	—	—	—	—	—	—	—	—	
75	2 7/8	7 1/4	2 1/4	5 1/4	1/4	1/2	3 1/4	3.063	1.311	1/2	UCF14 UCF14-44 UCF14-45	F14	UC14 UC14-44 UC14-45	7.0	67.4	48.3	14.5	—	—	—	—	—	—	—	—	—	—	—	—	—	—
	2 7/8	197	60	152	23	22	37	81.5	77.8	33.3	M20	UCF14-46 UCF14-47 UCF14-48	F14	UC14-46 UC14-47 UC14-48	7.0	—	—	—	—	—	—	—	—	—	—	—	—	—	—	—	
75	2 7/8	7 1/4	2 1/4	5 1/4	1/4	1/2	3 1/4	3.252	1.311	1/2	UCF15 UCF15-47 UCF15-48	F15	UC15 UC15-47 UC15-48	8.4	67.4	48.3	14.5	UCF15C	UCF15D	83.5	3 1/16	6.4	—	—	—	—	—	—	—	—	—
	2 7/8	197	68	152	23	24	40	89.3	82.6	33.3	M20	UCF15-49 UCF15-50 UCF15-51	F15	UC15-49 UC15-50 UC15-51	8.4	—	—	—	—	—	—	—	—	—	—	—	—	—	—	—	

Remarks 1. In Part No. of unit and units with covers, fitting codes follow bore diameter numbers. (See Table 10.5 in P62.)  
 2. Part No. of applicable grease fittings are shown below.  
 A-1/4-28UNF ..... 201~210, X05~X09, 305~308  
 A-1/8 ..... 211~218, X10~X20, 309~328  
 3. As for the triple seal type product (from 201 to 205 are the double seal type products), suffix code L3 (L2) follows the Part No. of unit or bearing. (Example of Part No.: UCF208L3, UC206L3)  
 4. For the dimensions and forms of applicable bearings, see the dimensional tables of ball bearing for unit.  
 5. Housings of nodular graphite cast iron are also available.

4-Bolt Flange Units

UCF  
Cylindrical bore (with set screws)  
d (75) ~ 140 mm



Variations of tolerance of distance from mounting surface to center of spherical bore (L<sub>1</sub>) and tolerance of position of bolt hole (S)

Housing No.	L <sub>1</sub>	S
F204-F210	F305-F310	±0.5
F211-F218	F311-F318	±0.8

Variations of tolerance of both bore diameter (d<sub>1</sub>)

Housing No.	d <sub>1</sub>	
F204-F218	F305-F318	±0.2
F219	F319-F318	±0.3

Shaft Dia. mm inch	Dimensions inch mm										Bolt Size inch mm	Standard Housing No.	Bearing No.	Mass kg	Basic Load Ratings kN	Factor	With Pressed Steel Cover				With Cast Iron Cover				
	L	A	J	N	A <sub>1</sub>	A <sub>2</sub>	A <sub>3</sub>	B	S	Unit No.							Open Type	Closed Type	Dimension mm inch	Mass kg	Unit No.	Open Type	Closed Type	Dimension mm inch	Mass kg
75 3	9 1/2	2 1/2	7 1/4	6 1/2	2 1/2	2 1/2	3 1/2	3 2/8	1 2/8	1 2/8	3 1/2	3.228	1.260	7/8	M22	UCF315-47	F315	UC315-47	UC315	UC315-48	UCF315C	UCF315D	106	4 1/2	12.9
80	8 3/4	2 1/4	6 3/4	5 3/4	2 1/4	2 1/4	3 1/4	3 3/8	1 3/4	1 3/4	3 1/2	3.374	1.343	7/8	M20	UCF216-50	F216	UC216-50	UC216	UCF216C	UCF216D	88.5	3 1/2	7.3	
	214	70	171	23	24	40	91.6	85.7	34.1	M20	UCFX16	FX16	UCX16	UCX16	9.4	84.0	61.9	14.5	UCFX16C	UCFX16D	96.5	3 1/2	9.4	8.5	
85	10 1/4	2 3/4	8 1/4	7 1/4	2 3/4	2 3/4	3 3/4	3 3/8	1 3/4	1 3/4	3 1/2	3.386	1.339	1	M27	UCF316	F316	UC316	UCF316C	UCF316D	107	4 1/2	14.2		
	250	68	196	31	27	38	90	86	34	M27	UCF217-52	F217	UC217-52	UC217	8.9	84.0	61.9	14.5	UCF217C	UCF217D	92.5	3 1/2	8.9	10.3	
90	8 1/4	2 1/4	6 3/4	5 3/4	2 1/4	2 1/4	3 1/4	3 3/8	1 3/4	1 3/4	3 1/2	3.280	1.563	7/8	M20	UCFX17-55	FX17	UCX17	UCX17-55	UCF317C	UCF317D	101.5	4	10.8	10.8
	214	70	171	23	24	40	96.3	96	39.7	M20	UCF317	F317	UC317	UC317	15.3	133	96.8	13.3	UCF317C	UCF317D	117	4 1/2	16.9		
95	10 1/4	2 3/4	8 1/4	7 1/4	2 3/4	2 3/4	3 3/4	3 3/8	1 3/4	1 3/4	3 1/2	3.280	1.563	7/8	M20	UCF218-56	F218	UC218-56	UC218	UCF218C	UCF218D	101.5	4	11.4	11.4
	235	68	187	23	25	40	96.3	96	39.7	M20	UCFX18	FX18	UCX18	UCX18	11.4	96.1	71.5	14.5	UCFX18C	UCFX18D	116	4 1/2	13.9		
100	8 1/4	2 1/4	6 3/4	5 3/4	2 1/4	2 1/4	3 1/4	3 3/8	1 3/4	1 3/4	3 1/2	3.280	1.563	7/8	M20	UCF318-56	F318	UC318-56	UC318	UCF318C	UCF318D	119	4 1/2	13.6	
	214	76	171	23	24	45	106.1	104	40.9	M30	UCF319	F319	UC319	UC319	18.9	143	107	13.3	UCF319C	UCF319D	140	5 1/2	23.8		
105	11 1/2	3	8 1/2	7 1/2	3	3	4 1/4	4 1/4	2 1/4	2 1/4	4 1/4	4.055	1.614	1 1/8	M30	UCFX20-63	FX20	UCX20-63	UCX20-64	UCF320C	UCF320D	152	5 1/2	21.6	
	290	94	228	35	30	59	121	103	41	M27	UCFX20-64	FX20	UCX20-64	UCX20-64	19.4	194	133	105	14.4	UCFX20C	UCFX20D	152	5 1/2	21.6	
110	12 1/2	3 1/2	9 1/2	8 1/2	3 1/2	3 1/2	4 1/2	4 1/2	2 1/2	2 1/2	4 1/2	4.252	1.654	1 1/4	M33	UCF320	F320	UC320	UC320-63	UCF320C	UCF320D	146	5 1/4	28.6	
	310	94	242	38	32	59	125	108	42	M33	UCF321	F321	UC321	UC321	25.8	173	141	13.2	UCF321C	UCF321D	148	5 1/2	33.2		
120	13 1/4	3 3/4	10 1/4	9 1/4	3 3/4	3 3/4	4 3/4	4 3/4	2 3/4	2 3/4	4 3/4	4.506	1.811	1 1/2	M36	UCF322	F322	UC322	UC322	UCF322C	UCF322D	154	6 1/4	41.7	
	340	96	266	41	35	60	131	117	46	M36	UCF324	F324	UC324	UC324	47.3	207	185	13.5	UCF324C	UCF324D	163	6 1/2	52.1		
130	14 1/4	4 1/4	11 1/4	10 1/4	4 1/4	4 1/4	5 1/4	5 1/4	2 1/4	2 1/4	5 1/4	4.961	2.008	1 3/8	M36	UCF326	F326	UC326	UC326	UCF326C	UCF326D	172	6 3/4	71.6	
	370	110	290	41	40	65	140	126	51	M36	UCF328	F328	UC328	UC328	65.5	229	214	13.6	UCF328C	UCF328D	186	7 1/2	89		
140	16 1/2	4 1/2	12 1/2	11 1/2	4 1/2	4 1/2	5 1/2	5 1/2	2 1/2	2 1/2	5 1/2	5.315	2.126	1 3/4	M36	UCF328	F328	UC328	UC328	UCF328C	UCF328D	186	7 1/2	89	
	410	115	320	41	45	65	146	135	54	M36	UCF328	F328	UC328	UC328	80.4	253	246	13.6	UCF328C	UCF328D	186	7 1/2	89		

Remarks 1. In Part No. of unit and units with covers, fitting codes follow bore diameter numbers. (See Table 10.5 in P.62.)  
 2. Part No. of applicable grease fittings are shown below.  
 A-1/6-ZRINF ..... 201-210, X05-X09, 305-308  
 A-R1/8 ..... 211-218, X10-X20, 309-328  
 3. As for the triple seal type product (from 201 to 205 are the double seal type products), suffix code L3 (L2) follows the Part No. of unit or bearing.  
 (Example of Part No. UCF206L3, UC206L3)  
 4. For the dimensions and forms of applicable bearings, see the dimensional tables of ball bearing for unit.  
 5. Housings of nodular graphite cast iron are also available.