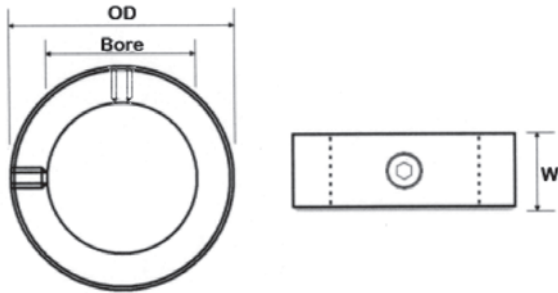


Set screw collars are most effective when used on a shaft made of a material which is softer than the set screw.

Steel-Cold Drawn Bar-Black Finish



Metric Shaft Collars

| Part No. | Bore | O.D. | W | Screw Size | Approx Kg |
|----------|------|------|------|------------|-----------|
| FSC-6 | 6.0 | 12.0 | 8.0 | M4*4 | 0.01 |
| FSC-8 | 8.0 | 16.0 | 8.0 | M4*4 | 0.01 |
| FSC-10 | 10.0 | 20.0 | 10.0 | M6*6 | 0.02 |
| FSC-12 | 12.0 | 22.0 | 12.0 | M6*6 | 0.03 |
| FSC-16 | 16.0 | 28.0 | 12.0 | M6*6 | 0.04 |
| FSC-20 | 20.0 | 32.0 | 14.0 | M6*6 | 0.05 |
| FSC-22 | 22.0 | 36.0 | 14.0 | M6*6 | 0.07 |
| FSC-25 | 25.0 | 40.0 | 16.0 | M6*6 | 0.10 |
| FSC-28 | 28.0 | 45.0 | 16.0 | M8*8 | 0.11 |
| FSC-30 | 30.0 | 45.0 | 16.0 | M8*8 | 0.15 |
| FSC-32 | 32.0 | 50.0 | 16.0 | M8*8 | 0.16 |
| FSC-35 | 35.0 | 56.0 | 16.0 | M8*8 | 0.18 |
| FSC-38 | 38.0 | 56.0 | 16.0 | M8*8 | 0.21 |
| FSC-40 | 40.0 | 63.0 | 18.0 | M10*12 | 0.30 |
| FSC-45 | 45.0 | 70.0 | 18.0 | M10*12 | 0.35 |
| FSC-50 | 50.0 | 80.0 | 18.0 | M10*12 | 0.40 |

| Bore Tolerances | |
|-----------------|------------|
| Bore | Tolerances |
| All | +0.01mm |
| | 0.05mm |

| Width Tolerance | |
|-----------------|-------|
| All | +0.08 |
| | -0.25 |

Imperial Shaft Collars

| Part No. | Bore | O.D. | W | Screw Size | Approx Kg |
|-----------|-------|-------|-------|------------|-----------|
| FSC-1/4 | 0.250 | 0.500 | 0.281 | M4*4 | 0.01 |
| FSC-3/8 | 0.375 | 0.750 | 0.375 | M6*5 | 0.01 |
| FSC-1/2 | 0.500 | 1.000 | 0.438 | M6*5 | 0.03 |
| FSC-5/8 | 0.625 | 1.125 | 0.500 | M6*6 | 0.04 |
| FSC-3/4 | 0.750 | 1.250 | 0.563 | M6*6 | 0.05 |
| FSC-7/8 | 0.875 | 1.500 | 0.563 | M6*6 | 0.07 |
| FSC-1 | 1.000 | 1.625 | 0.625 | M6*6 | 0.10 |
| FSC-1-1/8 | 1.125 | 1.750 | 0.625 | M8*6 | 0.11 |
| FSC-1-1/4 | 1.250 | 2.000 | 0.688 | M8*8 | 0.16 |
| FSC-1-3/8 | 1.375 | 2.125 | 0.750 | M8*8 | 0.18 |
| FSC-1-1/2 | 1.500 | 2.250 | 0.750 | M8*8 | 0.21 |
| FSC-1-5/8 | 1.625 | 2.500 | 0.813 | M8*8 | 0.29 |
| FSC-1-3/4 | 1.750 | 2.750 | 0.875 | M10*12 | 0.32 |
| FSC-1-7/8 | 1.875 | 2.750 | 0.875 | M10*12 | 0.35 |
| FSC-2 | 2.000 | 3.000 | 0.875 | M10*12 | 0.45 |

| Bore Tolerances | |
|-----------------|------------|
| Bore | Tolerances |
| Upto 1" | +0.0005" |
| | +0.002" |
| 1 1/8" to 2" | +0.0005 |
| | -0.003 |

| Width Tolerance | |
|-----------------|---------|
| All | +0.003" |
| | -0.010" |