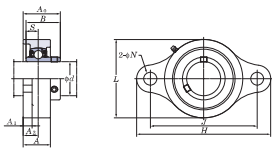


Corrosion Resistant Series 2-Bolt Flange Units

UCSFL-EH156
Cylindrical bore (with set screws)
d 12 ~ 50 mm



With Pressed Stainless Steel Cover



Variations of tolerance of distance from mounting surface to center of spherical bore (L_{10a}) and variations of tolerance of distance between centers of bolt holes (L_{20a})

Housing No.	d _{10a}	d _{20a}	Unit: mm
SFL203EH1~SFL210EH1	±0.05	±0.05	

Variations of tolerance of bolt hole diameter (L_{10c})

Housing No.	d _{10c}	Unit: mm
SFL203EH1~SFL210EH1	±0.02	

Shaft Dia. mm inch d	Dimensions inch mm											Bolt Size inch mm	Standard Unit No.	Housing No.	Bearing No.	Mass kg	Basic Load Ratings kN			Factor f ₀	With Pressed Stainless Steel Cover																					
	H	L	A	J	N	A ₁	A ₂	A ₃	B	S	C _r						C ₀	C ₁₀	Open Type		Closed Type	Dimension mm inch A _c	Mass kg																			
12	1/2																																									
15	3/8	3 7/32	2 1/16	1 9/16	3	9/16	1 1/32	9/16	1 1/8	1.079	0.453	11.5																														
		98	52	24	76.2	10	10	14	29.9	27.4																																
17	3/4	4 7/16	2 3/8	1 1/2	3 1/32	1 1/4	1 1/2	1 5/8	1.220	0.500																																
		113	60	26	89.7	10	10	15	33.3	31	12.7																															
20	7/8	5 1/8	2 1/2	1 1/2	3 9/16	1 1/2	1 1/2	1 5/8	1.343	0.563																																
		130	66	27.5	98.8	12	10	16	35.8	34.1	14.3																															
25	1 1/8	5 1/2	2 11/16	1 1/2	3 5/8	1 1/2	1 1/2	1 5/8	1.443	0.563																																
		130	66	27.5	98.8	12	10	16	35.8	34.1	14.3																															
30	1 1/4	5 13/16	3 1/2	1 1/2	4 1/8	1 1/2	1 1/2	1 5/8	1.500	0.626																																
		148	80	31	116.7	12	10	18	40.2	38.1	15.9																															
35	1 1/2	6 1/2	3 11/32	1 1/2	5 1/8	1 1/2	1 1/2	1 5/8	1.689	0.689																																
		161	85	34	130.2	13	11	19	44.4	42.9	17.5																															
40	1 3/4	6 7/8	3 11/16	1 1/2	5 7/8	1 1/2	1 1/2	1 5/8	1.937	0.748																																
		175	94	36	143.7	13	12	21	51.2	49.2	19																															
45	1 7/8	7 1/2	3 15/16	1 1/2	5 11/16	1 1/2	1 1/2	1 5/8	1.937	0.748																																
		188	100	38	148.4	15	13	22	52.2	49.2	19																															
50	2	7 3/4	4 1/16	1 1/2	6 1/8	1 1/2	1 1/2	1 5/8	2.031	0.748																																
		197	106	40	157	15	13	22	54.6	51.6	19																															

Remarks: 1. In Part No. of unit and units with covers, fitting codes follow bore diameter codes. (See Table 10.5 in P.62.)
2. Part No. of applicable grease fitting is A-1/4-28UNFN12.
3. For the dimensions and forms of applicable bearings, see the dimensional tables of ball bearing for unit.