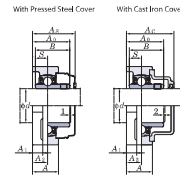
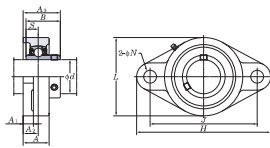


2-Bolt Flange Units

UCFL  
Cylindrical bore (with set screws)  
d 12 ~ (45) mm



Variations of tolerance of distance from mounting surface to center of spherical bore (L<sub>1</sub>) and tolerance of position of both hole (S)

Housing No.	L <sub>1</sub> mm	S
FL204-FL210, FL205-FL210	±0.2	±0.2
FL311-FL315	±0.8	±1

Variations of tolerance of both hole diameter (L<sub>2</sub>)

Housing No.	L <sub>2</sub> mm
FL204-FL210, FL205-FL210	±0.2
FL311-FL315	±0.3

Forms and dimensions of L<sub>1</sub> of FL204E3 and FL205E3 (housing with cast iron cover) are shown below.

FL204E3 L<sub>1</sub> = 65 mm  
FL205E3 L<sub>1</sub> = 72 mm

Shaft Dia. mm inch	Dimensions inch mm											Bolt Size inch mm	Standard			Mass kg	Basic Load Ratings kN			Factor f <sub>0</sub>	With Pressed Steel Cover				With Cast Iron Cover			
	H	L	A	J	N	A <sub>1</sub>	A <sub>2</sub>	A <sub>0</sub>	B	S	Unit No.		Housing No.	Bearing No.	C <sub>0</sub>		C <sub>10</sub>	C <sub>05</sub>	Open Type		Closed Type	Dimension mm	Mass kg	Unit No.	Open Type	Closed Type	Dimension mm	Mass kg
12	1/2										UCFL201		UC201	0.50				UCFL201C	UCFL201D	37.5 1 1/2	0.50							
15	3/8	4 1/2	2 1/2	1	3 1/2	1 1/2	7/8	1 1/2	1 1/8	1.220	0.500	1/8	M10	12.8	6.65	13.2												
17	3/4	113	60	25.5	90	12	11	15	33.3	31	12.7																	
20	3/4																											
25	1	5 1/4	3 1/2	1 3/8	4 1/2	1 1/2	1 1/2	1 1/2	1 1/2	1.500	0.626	3/8	M14	14.0	7.85	13.9												
25	1	130	68	27	99	16	13	16	35.8	34.1	14.3																	
30	1 1/8	5 7/8	3 3/4	1 3/4	4 3/4	1 1/2	1 1/2	1 1/2	1 1/2	1.496	0.591	1/2	M16	19.5	11.3	13.9												
30	1 1/8	141	83	30	117	12	13	18	40.2	38.1	15.9																	
30	1 1/8	150	80	29	113	19	13	16	39	38	15																	
35	1 1/4	5 1/2	3 3/4	1 3/4	4 1/2	1 1/2	1 1/2	1 1/2	1 1/2	1.500	0.626	1/2	M20	21.2	10.9	12.6												
35	1 1/4	148	80	31	117	16	13	18	40.2	38.1	15.9																	
35	1 1/4	156	95	34	130	16	14	19	44.4	42.9	17.5																	
35	1 1/4	180	90	32	134	23	15	18	44	43	17																	
40	1 1/2	6 1/2	3 3/4	1 3/4	4 1/2	1 1/2	1 1/2	1 1/2	1 1/2	1.689	0.689	1/2	M14	19.5	11.3	13.9												
40	1 1/2	156	95	34	130	16	14	19	44.4	42.9	17.5																	
40	1 1/2	180	90	32	134	23	15	18	44	43	17																	
45	1 3/8	6 1/2	3 3/4	1 3/4	4 1/2	1 1/2	1 1/2	1 1/2	1 1/2	1.689	0.689	1/2	M14	25.7	15.4	13.9												
45	1 3/8	179	111	40	148	16	14	22	52.2	49.2	19																	
45	1 3/8	188	108	38	148	19	15	22	52.2	49.2	19																	
45	1 3/8	200	112	40	158	23	17	23	56	52	19																	
45	1 3/8	189	116	40	157	16	14	23	55.6	51.6	19																	

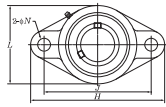
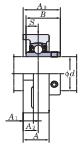
Remarks 1. In Part No. of unit and units with covers, fitting codes follow bore diameter numbers. (See Table 10.5 in P.6.)  
2. Part No. of applicable grease fittings are shown below.  
A-1/4-28UNF ..... 201-210, X05-X09, 305-308  
A-R1/8 ..... 211-218, X10, 309-324

3. As for the triple seal type product (from 201 to 205 are the double seal type products), suffix code L3 (or L2) follows the Part No. of unit or bearing.  
(Example of Part No.: UCFL206L3, UC206L3)  
4. For the dimensions and forms of applicable bearings, see the dimensional tables of ball bearing for unit.  
5. Housings of nodular graphite cast iron are also available.

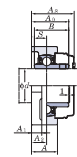


2-Bolt Flange Units

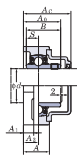
UCFL  
Cylindrical bore (with set screws)  
d (90) ~ 120 mm



With Pressed Steel Cover



With Cast Iron Cover



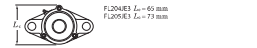
Variations of tolerance of distance from mounting surface to center of spherical bore (L<sub>2</sub>) and tolerance of position of both hole (S)

Housing No.	L <sub>2</sub> mm	S mm		
FL324-FL318	FL305-FL310	FL325-FL310	±0.2	0.3
FL311-FL315	FL311-FL324		±0.8	1

Variations of tolerance of both hole diameter (L<sub>1</sub>)

Housing No.	L <sub>1</sub> mm		
FL204-FL218	FL405-FL410	FL305-FL311	±0.2
	FL312-FL324		±0.3

Forms and dimensions of L<sub>1</sub> of FL204E3 and FL205E3 (housing with cast iron cover) are shown below.



Shaft Dia. mm inch	Dimensions inch mm													Bolt Size inch mm	Standard			Mass kg	Basic Load Ratings kN			Factor f <sub>0</sub>	With Pressed Steel Cover		Mass kg	With Cast Iron Cover		Mass kg						
	d	H	L	A	J	N	A <sub>1</sub>	A <sub>2</sub>	A <sub>0</sub>	B	S	Unit No.	Housing No.		Bearing No.	C <sub>0</sub>	C <sub>10</sub>		Open Type	Closed Type	Unit No.		Closed Type	Dimension mm		inch								
90	3 1/2	15 1/2	9 1/4	3	12 1/2	1 1/2	1 1/2	1 1/2	3 1/2	3/80	1.575	1 1/4	UCFL318-556 UCFL318	FL318	UC318-646 UC318	19.0 19.0	143 107	13.3	-	-	-	-	-	-	-	-	-	-	-	-	-	-	-	
95	-	15 1/2	9 1/2	3 1/2	13	1 1/2	1 1/2	1 1/2	4 1/4	4.055	1.614	1 1/4	UCFL319	FL319	UC319	24.6	153 119	13.3	-	-	-	-	-	-	-	-	-	-	-	-	-	-		
100	3 13/16	17 1/4	10 3/4	3 1/2	14 1/4	1 1/2	1 1/2	1 1/2	4 3/4	4.252	1.654	1 1/2	UCFL320 UCFL320-63 UCFL320-64	FL320	UC320 UC320-63 UC320-64	29.4 29.4 29.4	173 141	13.2	-	-	-	-	-	-	-	-	-	-	-	-	-	-	-	-
110	-	18 1/2	11 1/2	3 3/2	15 3/4	1 1/2	1 1/2	1 1/2	5 1/2	4.606	1.811	1 1/2	UCFL322	FL322	UC322	36.2	205 180	13.2	-	-	-	-	-	-	-	-	-	-	-	-	-	-	-	
120	-	20 1/2	13	4 1/2	16 3/4	1 1/2	1 1/2	1 1/2	2 1/2	5 1/2	4.961	2.008	1 3/4	UCFL324	FL324	UC324	51.6	207 185	13.5	-	-	-	-	-	-	-	-	-	-	-	-	-	-	-

Remarks 1. In Part No. of unit and units with covers, fitting codes follow bore diameter numbers. (See Table 10.5 in P.62)  
 2. Part No. of applicable grease fittings are shown below.  
 A-114-28UNF ..... 201-210, X05-X09, 305-308  
 A-R1/8 ..... 211-218, X10, 309-324  
 3. As for the triple seal type product (from 201 to 205 are the double seal type products), suffix code L3 (or L2) follows the Part No. of unit or bearing.  
 (Example of Part No.: UCFL206L3, UC206L3)  
 4. For the dimensions and forms of applicable bearings, see the dimensional tables of ball bearing for unit.  
 5. Housings of nonferrous graphite cast iron are also available.