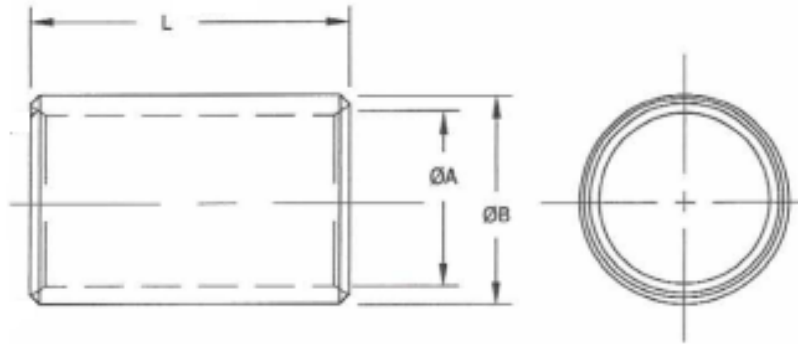


Bronze Bushes (Inch)



"Australia's Only Genuine Wholesaler"



Part No.	Inside Diameter (A) (Inch)	Outside Diameter (B) (Inch)	Width (L) (Inch)	Weight (Kg)	Part No.	Inside Diameter (A) (Inch)	Outside Diameter (B) (Inch)	Width (L) (Inch)	Weight (Kg)	Part No.	Inside Diameter (A) (Inch)	Outside Diameter (B) (Inch)	Width (L) (Inch)	Weight (Kg)
FB0001	5/16	7/16	1/2	0.0054	FB1060	2-1/4	2-3/4	2-1/2	0.7134	FB0319	5/8	13/16	2-1/2	0.0769
FB0010	3/8	1/2	3/4	0.0094	FB1061	2-1/4	2-3/4	3	0.8651	FB0322	7/16	11/16	2	0.0642
FB0100	1/2	9/16	1-1/2	0.0114	FB1062	2-1/4	2-3/4	3-1/2	0.9987	FB0325	5/8	7/8	1	0.0428
FB0521	3/4	15/16	3		FB1063	2-1/4	2-3/4	4	1.1414	FB0328	5/8	7/8	1-1/2	0.0642
FB0716	7/8	1-1/16	3		FB1077	1/2	11/16	1	0.0254	FB0329	5/8	7/8	2	0.0856
FB1001	1-1/4	1-3/8	3	0.1124	FB1073	2-1/2	3	4	1.2555	FB0330	5/8	7/8	2-1/4	0.0963
FB1002	1-1/4	1-1/2	1-3/4	0.1373	FB0011	3/8	1/2	1	0.0125	FB0331	5/8	7/8	2-1/2	0.107
FB1003	1-1/4	1-1/2	2	0.1569	FB0112	1/2	11/16	2	0.0508	FB0335	5/8	7/8	3	0.1284
FB1004	1-1/4	1-1/2	2-1/2	0.1962	FB0113	1/2	3/4	1	0.0357	FB0337	5/8	1	2	0.1391
FB1005	1-1/4	1-1/2	3	0.2354	FB0115	1/2	3/4	1-1/2	0.0535	FB0036	7/16	5/8	1	0.0227
FB1007	1-1/4	1-1/2	3-1/2	0.2477	FB0116	1/2	3/4	1-3/4	0.0624	FB0039	7/16	11/16	1	0.0321
FB1008	1-1/4	1-1/2	4	0.3139	FB0117	1/2	3/4	2	0.0173	FB0004	5/16	7/16	1	0.0107
FB1009	1-1/4	1-5/8	1-3/4	0.2154	FB0119	1/2	3/4	2-1/2	0.0892	FB0403	11/16	13/16	2	0.0428
FB1010	1-3/8	1-5/8	2	0.1712	FB0012	3/8	1/2	2	0.025	FB0409	11/16	7/8	2	0.0669
FB1011	1-3/8	1-5/8	3	0.2568	FB0121	1/2	7/8	2	0.1177	FB0502	3/4	7/8	1	0.0232
FB1012	1-3/8	1-3/4	4	0.535	FB0122	1/2	1	2	0.1712	FB0505	3/4	7/8	1-1/2	0.0348
FB1013	1-1/2	1-5/8	2	0.0892	FB0013	3/8	1/2	1-1/2	0.0187	FB0507	3/4	7/8	2	0.0464
FB1014	1-1/2	1-3/4	2-1/2	0.2318	FB0002	5/16	7/16	1-1/2	0.0054	FB0510	3/4	7/8	2-1/2	0.058
FB1015	1-1/2	1-3/4	3-1/2	0.2782	FB0020	7/16	9/16	1	0.0143	FB0515	3/4	15/16	1-1/2	0.0542
FB1017	1-1/2	1-3/4	4	0.371	FB0203	9/16	11/16	1-1/2	0.0288	FB0520	3/4	15/16	2-1/2	0.0903
FB1018	1-3/4	2-1/8	4	0.6634	FB0207	9/16	11/16	2	0.0357	FB0522	3/4	1	1	0.0499
FB1019	2	2-1/4	3-1/2	0.4245	FB0216	9/16	3/4	1-3/4	0.0492	FB0523	3/4	1	1-1/4	0.0624
FB0102	1/2	5/8	1	0.0161	FB0217	9/16	3/4	2	0.0562	FB0524	3/4	1	1-1/2	0.0749
FB1020	1-1/2	2	2-1/2	0.4994	FB0219	9/16	3/4	2-1/4	0.0632	FB0525	3/4	1	1-3/4	0.0874
FB1021	1-1/2	2	3	0.5992	FB0220	9/16	3/4	2-1/2	0.0702	FB0526	3/4	1	2	0.0999
FB1022	1-1/2	2	3-1/2	0.6991	FB0224	9/16	13/16	2	0.0785	FB0528	3/4	1	2-1/4	0.1124
FB1023	1-1/2	2	4	0.799	FB0228	9/16	7/8	2	0.1025	FB0529	3/4	1	2-1/2	0.1248
FB0103	1/2	5/8	1-1/4	0.0201	FB0025	7/16	9/16	2	0.0285	FB0530	3/4	1	3	0.1498
FB1030	1-3/4	2	2-1/2	0.2675	FB0027	7/16	5/8	1-1/2	0.0341	FB0531	3/4	1-1/16	2	0.1293
FB1031	1-3/4	2	3	0.321	FB0029	7/16	5/8	2	0.0455	FB0533	3/4	1-1/8	1-1/2	0.1204
FB1033	1-3/4	2	4	0.4276	FB0003	5/16	7/16	3/4	0.008	FB0536	3/4	1-1/8	2-1/2	0.2006
FB1037	1-3/4	2-1/4	3	0.6848	FB0301	5/8	11/16	1-1/2	0.0145	FB0537	3/4	1-1/8	3	0.2408
FB1038	1-3/4	2-1/4	3-1/2	0.799	FB0302	5/8	11/16	2	0.0187	FB0538	3/4	1-1/4	2-1/2	0.2854
FB1039	1-3/4	2-1/2	4	1.4553	FB0303	5/8	3/4	3/4	0.0147	FB0603	13/16	15/16	2	0.0499
FB0104	1/2	5/8	1-1/2	0.0241	FB0304	5/8	3/4	1	0.0196	FB0606	13/16	1	2	0.0776
FB1040	2	2-1/4	2-1/2	0.3032	FB0305	5/8	3/4	1-1/4	0.0245	FB0608	13/16	1-1/16	2	0.107
FB1050	2	2-1/2	2-1/2	0.642	FB0308	5/8	3/4	1-3/4	0.0343	FB0610	13/16	1-1/16	2-1/2	0.1338
FB1051	2	2-1/2	3	0.7704	FB0309	5/8	3/4	2	0.0392	FB0612	13/16	1-1/16	3	0.1605
FB1052	2	2-1/2	3-1/2	0.8989	FB0311	5/8	3/4	2-1/2	0.049	FB0702	7/8	1	1-1/4	0.0334
FB1053	2	2-1/2	4	1.0273	FB0312	5/8	3/4	3	0.0589	FB0703	7/8	1	1-1/2	0.0401
FB0106	1/2	5/8	2	0.0321	FB0317	5/8	13/16	2	0.0615					

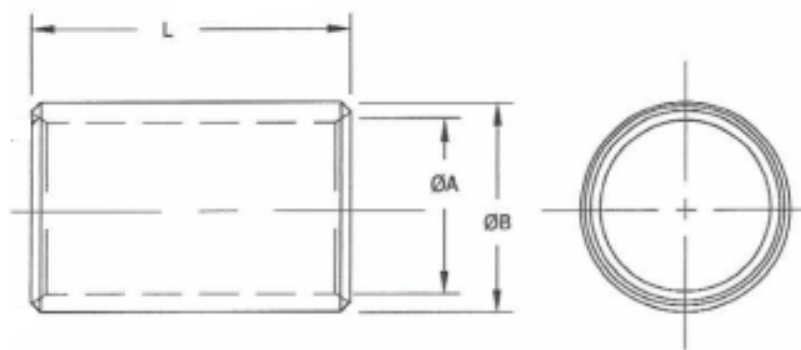
Part No.	Inside Diameter (A)	Outside Diameter (B)	Width (L)	Weight	Part No.	Inside Diameter (A)	Outside Diameter (B)	Width (L)	Weight	Part No.	Inside Diameter (A)	Outside Diameter (B)	Width (L)	Weight
	(Inch)	(Inch)	(Inch)	(Kg)		(Inch)	(Inch)	(Inch)	(Kg)		(Inch)	(Inch)	(Inch)	(Kg)
FB0705	7/8	1	2	0.0535	FB0813	1	1-1/4	1-1/4	0.0825	FB0101	1/2	5/8	3/4	0.012
FB0707	7/8	1	2-1/2	0.0669	FB0814	1	1-1/4	1-1/2	0.0963	FB1032	1-3/4	2	3-1/2	0.3745
FB0708	7/8	1	3	0.0803	FB0815	1	1-1/4	1-3/4	0.1124	FB1041	2	2-1/4	3	0.3638
FB0713	7/8	1-1/16	2	0.0829	FB0816	1	1-1/4	2	0.1284	FB1071	2-1/2	3	3	0.9417
FB0715	7/8	1-1/16	2-1/2	0.1037	FB0818	1	1-1/4	2-1/2	0.1605	FB0019	7/16	9/16	3/4	0.0107
FB0718	7/8	1-1/8	1-1/2	0.0856	FB0820	1	1-1/4	3	0.1926	FB0232	9/16	1	2	0.1561
FB0720	7/8	1-1/8	2	0.1141	FB0821	1	1-1/4	3-1/2	0.2247	FB0236	9/16	13/16	1	0.0392
FB0723	7/8	1-1/8	3	0.1712	FB0822	1	1-1/4	4	0.2568	FB0307	5/8	3/4	1-1/2	0.0294
FB0726	7/8	1-1/4	2	0.1819	FB0823	1	1-3/8	2	0.2033	FB0415	11/16	15/16	2	0.0927
FB0728	7/8	1-1/4	2-1/2	0.2274	FB0824	1	1-3/8	2-1/2	0.2541	FB0418	11/16	1	2	0.1204
FB0729	7/8	1-1/4	3	0.2729	FB0825	1	1-3/8	3	0.305	FB0490	3/4	1	3/4	0.0375
FB0730	7/8	1-3/8	3	0.3852	FB0900	1-1/8	1-1/4	1-1/2	0.0509	FB0500	3/4	13/16	1-1/2	0.0671
FB0731	15/16	1-1/16	1-1/2	0.0428	FB0901	1-1/8	1-1/4	2	0.0678	FB0501	3/4	7/8	3/4	0.0174
FB0736	15/16	1-1/8	3	0.1324	FB0902	1-1/8	1-1/4	2-1/2	0.0847	FB0504	3/4	7/8	1-1/4	0.029
FB0738	15/16	1-3/16	2	0.1213	FB0903	1-1/8	1-1/4	3	0.1017	FB0532	3/4	1-1/16	2-1/2	0.1616
FB0800	1	1-1/16	1-1/2	0.0221	FB0904	1-1/8	1-3/8	2	0.1427	FB0534	3/4	1-1/8	2	0.1605
FB0801	1	1-1/8	1	0.0303	FB0906	1-1/8	1-3/8	3	0.214	FB0602	13/16	15/16	1-1/2	0.0375
FB0802	1	1-1/8	1-1/4	0.0379	FB0908	1-1/8	1-3/8	4	0.2854	FB0607	13/16	1	2-1/2	0.097
FB0803	1	1-1/8	1-1/2	0.0455	FB0909	1-1/8	1-1/2	3	0.3371	FB0722	7/8	1-1/8	2-1/2	0.1427
FB0805	1	1-1/8	2	0.0606	FB0912	1-1/4	1-1/2	1	0.0785	FB0734	15/16	1-1/8	1-1/4	0.0552
FB0807	1	1-1/8	3	0.091	FB0913	1-1/4	1-1/2	1-1/4		FB0910	1-3/8	1-5/8	4	0.3424
FB0810	1	1-3/16	2-1/2	0.117	FB0914	1-1/4	1-1/2	1-1/2	0.1177	FB0099	1/2	3/4	3/4	0.0268
FB0811	1	1-1/4	1	0.0642	FB0996	1-1/2	1-3/4	1-1/2	0.1391					
FB0812	1	1-1/4	1-1/8	0.0722	FB0998	1-1/2	1-3/4	2	0.1853					



Bronze Bushes (Metric)

Part No.	Inside Diameter (A)	Outside Diameter (B)	Width (L)	Weight	Part No.	Inside Diameter (A)	Outside Diameter (B)	Width (L)	Weight
	(Inch)	(Inch)	(Inch)	(Kg)		(Inch)	(Inch)	(Inch)	(Kg)
FBM081010	8	10	10	0.0025	FBM303540	30	35	40	0.0905
FBM081020	8	10	20	0.005	FBM354040	35	40	40	0.1044
FBM081030	8	10	30	0.0071	FBM354050	35	40	50	0.1305
FBM081040	8	10	40	0.01	FBM354080	35	40	80	0.2087
FBM081210	8	12	10	0.0056	FBM354540	35	45	40	0.2227
FBM081220	8	12	20	0.0111	FBM404540	40	45	40	0.1403
FBM081230	8	12	30	0.0167	FBM4045100	40	45	100	0.3507
FBM101220	10	12	20	0.0061	FBM405050	40	50	50	0.3406
FBM101620	10	16	20	0.0217	FBM455550	45	55	50	0.3479
FBM101630	10	16	30	0.0326	FBM506060	50	60	60	0.4592
FBM101650	10	16	50	0.0543	FBM122050	12	20	50	0.0891
FBM121640	12	16	40	0.0312	FBM162050	16	20	50	0.0501
FBM122030	12	20	30	0.0534	FBM162480	16	24	80	0.1781
FBM122040	12	20	40	0.0712	FBM202430	20	24	30	0.0367
FBM162020	16	20	20	0.0201	FBM202480	20	24	80	0.098
FBM162030	16	20	30	0.0301	FBM203080	20	30	80	0.2783
FBM162060	16	20	60	0.0601	FBM2530100	25	30	100	0.1913
FBM162430	16	24	30	0.0668	FBM2535100	25	35	100	0.4175
FBM202450	20	24	50	0.0612	FBM3040100	30	40	100	0.4871
FBM203030	20	30	30	0.1044	FBM3540100	35	40	100	0.2609
FBM203040	20	30	40	0.1392	FBM3545100	35	45	100	0.5566
FBM203050	20	30	50	0.174	FBM4050100	40	50	100	0.6812
FBM253040	25	30	40	0.0765	FBM4555100	45	55	100	0.6958
FBM253050	25	30	50	0.0957	FBM505580	50	55	80	
FBM253060	25	30	60	0.1148	FBM506080	50	60	80	0.6123
FBM253530	25	35	30	0.1252	FBM5060100	50	60	100	0.7654
FBM253550	25	35	50	0.2087					

Bronze Bar (Inch)



Part No.	Inside Diameter (A) (Inch)	Outside Diameter (B) (Inch)	Width (L) (Inch)	Style	Part No.	Inside Diameter (A) (Inch)	Outside Diameter (B) (Inch)	Width (L) (Inch)	Style
BAR-BRONZE-1	-	1	1	Solid	BAR-BRONZE-1-1/2X1/2	1-1/2	1/2	1	Hollow
BAR-BRONZE-1/2	-	1/2	1	Solid	BAR-BRONZE-1-3/4X1	1-3/4	1	1	Hollow
BAR-BRONZE-1-1/2	-	1-1/2	1	Solid	BAR-BRONZE-1-3/4X1-1/4	1-3/4	1-1/4	1	Hollow
BAR-BRONZE-1-1/4	-	1-1/4	1	Solid	BAR-BRONZE-2-1/2X1	2-1/2	1	1	Hollow
BAR-BRONZE-2	-	2	1	Solid					
BAR-BRONZE-3/4	-	3/4	1	Solid					
BAR-BRONZE-5/8	-	5/8	1	Solid					