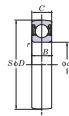
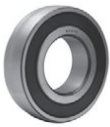


SC
Cylindrical bore
d 17 ~ 40 mm



Shaft Dia. mm <i>d</i>	Dimensions								Basic Load Ratings kN		Factor <i>f₀</i>	Bearing No.	Mass kg
	<i>D</i>		<i>B</i>		<i>C</i>		<i>r</i> (min.)		<i>C₀</i>	<i>C₁₀</i>			
	mm	inch	mm	inch	mm	inch	mm	inch					
17	40	1.575	12	0.472	12	0.472	0.6	0.024	9.55	4.89	13.2	SC203	0.10
20	47	1.850	14	0.551	14	0.551	1	0.039	12.8	6.65	13.2	SC204	0.15
25	52	2.047	15	0.591	15	0.591	1	0.039	14.0	7.85	13.9	SC205	0.18
30	62	2.441	16	0.630	16	0.630	1	0.039	19.5	11.3	13.9	SC206	0.27
35	72	2.835	17	0.669	17	0.669	1.1	0.043	25.7	15.4	13.9	SC207	0.42
40	80	3.150	18	0.709	18	0.709	1.1	0.043	29.1	17.8	14.0	SC208	0.60