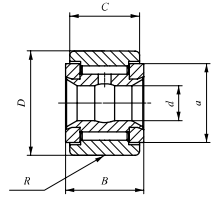


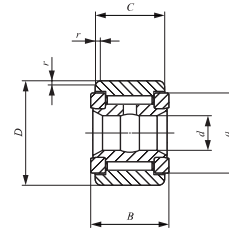
IJKO Non-separable Roller Followers, Inch Series Full Complement Type /With Inner Ring

Selectable product specifications

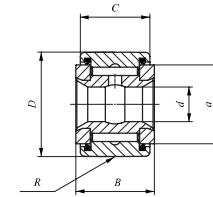
Roller guide type	No symbol	Caged
	V	Full complement
Seal structure	No symbol	Shield type
	UU	Sealed type
Shape of outer ring	No symbol	Cylindrical outer ring
	R	Crowned outer ring



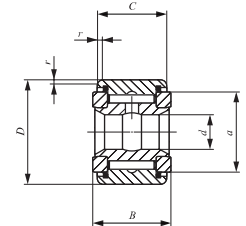
CRY...VR



CRY...V



CRY...VUUR



CRY...VUU

Stud dia. mm (inch)	Identification number				Mass (Ref.) g	Boundary dimensions mm(inch)			
	Shield type		Sealed type			d	D	B	C
	Crowned outer ring	Cylindrical outer ring	Crowned outer ring	Cylindrical outer ring					
6.350 ($\frac{1}{4}$)	CRY 12 VR	CRY 12 V	CRY 12 VUUR	CRY 12 VUU	27	6.350($\frac{1}{4}$)	19.050($\frac{3}{4}$)	14.288(0.5625)	12.700($\frac{1}{2}$)
	CRY 14 VR	CRY 14 V	CRY 14 VUUR	CRY 14 VUU	36	6.350($\frac{1}{4}$)	22.225($\frac{7}{8}$)	14.288(0.5625)	12.700($\frac{1}{2}$)
7.938 ($\frac{5}{16}$)	CRY 16 VR	CRY 16 V	CRY 16 VUUR	CRY 16 VUU	68	7.938($\frac{5}{16}$)	25.400(1)	17.463(0.6875)	15.875($\frac{5}{8}$)
	CRY 18 VR	CRY 18 V	CRY 18 VUUR	CRY 18 VUU	77	7.938($\frac{5}{16}$)	28.575(1 $\frac{1}{8}$)	17.463(0.6875)	15.875($\frac{5}{8}$)
9.525 ($\frac{3}{8}$)	CRY 20 VR	CRY 20 V	CRY 20 VUUR	CRY 20 VUU	109	9.525($\frac{3}{8}$)	31.750(1 $\frac{1}{4}$)	20.638(0.8125)	19.050($\frac{3}{4}$)
	CRY 22 VR	CRY 22 V	CRY 22 VUUR	CRY 22 VUU	136	9.525($\frac{3}{8}$)	34.925(1 $\frac{3}{8}$)	20.638(0.8125)	19.050($\frac{3}{4}$)
11.112 ($\frac{7}{16}$)	CRY 24 VR	CRY 24 V	CRY 24 VUUR	CRY 24 VUU	186	11.112($\frac{7}{16}$)	38.100(1 $\frac{1}{2}$)	23.813(0.9375)	22.225($\frac{7}{8}$)
	CRY 26 VR	CRY 26 V	CRY 26 VUUR	CRY 26 VUU	227	11.112($\frac{7}{16}$)	41.275(1 $\frac{5}{8}$)	23.813(0.9375)	22.225($\frac{7}{8}$)
12.700 ($\frac{1}{2}$)	CRY 28 VR	CRY 28 V	CRY 28 VUUR	CRY 28 VUU	290	12.700($\frac{1}{2}$)	44.450(1 $\frac{3}{4}$)	26.988(1.0625)	25.400(1)
	CRY 30 VR	CRY 30 V	CRY 30 VUUR	CRY 30 VUU	363	12.700($\frac{1}{2}$)	47.625(1 $\frac{7}{8}$)	26.988(1.0625)	25.400(1)
15.875 ($\frac{5}{8}$)	CRY 32 VR	CRY 32 V	CRY 32 VUUR	CRY 32 VUU	476	15.875($\frac{5}{8}$)	50.800(2)	33.338(1.3125)	31.750(1 $\frac{1}{4}$)
	CRY 36 VR	CRY 36 V	CRY 36 VUUR	CRY 36 VUU	599	15.875($\frac{5}{8}$)	57.150(2 $\frac{1}{4}$)	33.338(1.3125)	31.750(1 $\frac{1}{4}$)
19.050 ($\frac{3}{4}$)	CRY 40 VR	CRY 40 V	CRY 40 VUUR	CRY 40 VUU	816	19.050($\frac{3}{4}$)	63.500(2 $\frac{1}{2}$)	39.688(1.5625)	38.100(1 $\frac{1}{2}$)
	CRY 44 VR	CRY 44 V	CRY 44 VUUR	CRY 44 VUU	1 020	19.050($\frac{3}{4}$)	69.850(2 $\frac{3}{4}$)	39.688(1.5625)	38.100(1 $\frac{1}{2}$)
25.400 (1)	CRY 48 VR	CRY 48 V	CRY 48 VUUR	CRY 48 VUU	1 410	25.400(1)	76.200(3)	46.038(1.8125)	44.450(1 $\frac{3}{4}$)
	CRY 52 VR	CRY 52 V	CRY 52 VUUR	CRY 52 VUU	1 640	25.400(1)	82.550(3 $\frac{1}{4}$)	46.038(1.8125)	44.450(1 $\frac{3}{4}$)
28.575 (1 $\frac{1}{8}$)	CRY 56 VR	CRY 56 V	CRY 56 VUUR	CRY 56 VUU	2 250	28.575(1 $\frac{1}{8}$)	88.900(3 $\frac{1}{2}$)	52.388(2.0625)	50.800(2)
31.750 (1 $\frac{1}{4}$)	CRY 64 VR	CRY 64 V	CRY 64 VUUR	CRY 64 VUU	3 200	31.750(1 $\frac{1}{4}$)	101.600(4)	58.738(2.3125)	57.150(2 $\frac{1}{4}$)

Remarks1. The inner ring has an oil groove and an oil hole.
2. Provided with prepacked grease.

a	R	r	Shaft dia. mm						Basic dynamic load rating C	Basic static load rating C ₀
			Push fit		Drive fit		Press fit			
			Min.	Max.	Min.	Max.	Min.	Max.		
14.4(0.567)	250 (10)	0.794 ($\frac{1}{16}$)	6.332	6.342	6.348	6.358	6.353	6.363	8 710	12 300
14.4(0.567)	250 (10)	0.794 ($\frac{1}{16}$)	6.332	6.342	6.348	6.358	6.353	6.363	8 710	12 300
19.6(0.772)	300 (12)	1.191 ($\frac{1}{8}$)	7.920	7.930	7.935	7.945	7.940	7.950	13 100	22 700
19.6(0.772)	300 (12)	1.588 ($\frac{1}{8}$)	7.920	7.930	7.935	7.945	7.940	7.950	13 100	22 700
25.0(0.984)	360 (14)	1.588 ($\frac{1}{8}$)	9.507	9.517	9.523	9.533	9.528	9.538	23 600	31 700
25.0(0.984)	360 (14)	1.588 ($\frac{1}{8}$)	9.507	9.517	9.523	9.533	9.528	9.538	23 600	31 700
28.8(1.134)	500 (20)	1.588 ($\frac{1}{8}$)	11.095	11.105	11.110	11.120	11.115	11.125	28 200	40 100
28.8(1.134)	500 (20)	1.588 ($\frac{1}{8}$)	11.095	11.105	11.110	11.120	11.115	11.125	28 200	40 100
32.7(1.287)	500 (20)	1.588 ($\frac{1}{8}$)	12.682	12.692	12.698	12.708	12.708	12.718	35 300	55 600
32.7(1.287)	500 (20)	1.588 ($\frac{1}{8}$)	12.682	12.692	12.698	12.708	12.708	12.718	35 300	55 600
36.0(1.417)	600 (24)	1.588 ($\frac{1}{8}$)	15.857	15.867	15.873	15.883	15.883	15.893	45 700	80 600
36.0(1.417)	600 (24)	1.588 ($\frac{1}{8}$)	15.857	15.867	15.873	15.883	15.883	15.893	45 700	80 600
43.3(1.705)	760 (30)	2.381 ($\frac{1}{8}$)	19.032	19.042	19.048	19.058	19.058	19.068	61 400	116 000
43.3(1.705)	760 (30)	2.381 ($\frac{1}{8}$)	19.032	19.042	19.048	19.058	19.058	19.068	61 400	116 000
54.0(2.125)	760 (30)	2.381 ($\frac{1}{8}$)	25.377	25.390	25.397	25.410	25.408	25.420	77 600	172 000
54.0(2.125)	760 (30)	2.381 ($\frac{1}{8}$)	25.377	25.390	25.397	25.410	25.408	25.420	77 600	172 000
61.9(2.437)	760 (30)	2.381 ($\frac{1}{8}$)	28.522	28.565	28.572	28.585	28.583	28.595	111 000	239 000
71.0(2.797)	760 (30)	2.381 ($\frac{1}{8}$)	31.727	31.740	31.747	31.760	31.758	31.770	142 000	317 000