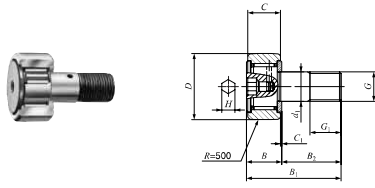


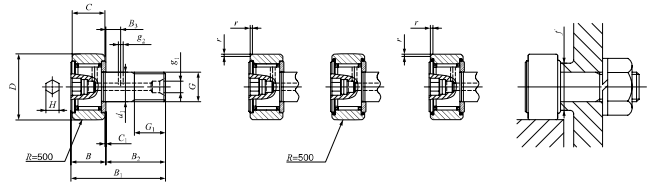
IKO Standard Type Cam Followers With Cage/With Hexagon Hole

Selectable product specifications

Material	Carbon steel
	Stainless steel
Roller guide type	Caged
	Full complement
Seal structure	Shield type
	Sealed type
Shape of outer ring	Cylindrical outer ring
	Crowned outer ring



CF--(F)BR
Stud dia d_1 3 to 10mm



CF--(F)BR Stud dia d_1 12 to 30mm
CF--(F)B CF--(F)BUUR CF--(F)BUU

Stud dia, mm	Identification number				Mass (Ref.) g	D	C	d_1	G	G_1
	Shield type		Sealed type							
	With crowned outer ring	With cylindrical outer ring	With crowned outer ring	With cylindrical outer ring						
3	CF 3 BR	CF 3 B	CF 3 BUUR	CF 3 BUU	4.3	10	7	3	M 3 × 0.5	5
	CF 3 FBR	CF 3 FB	CF 3 FBUUR	CF 3 FBUU	4.3	10	7	3	M 3 × 0.5	5
4	CF 4 BR	CF 4 B	CF 4 BUUR	CF 4 BUU	7.4	12	8	4	M 4 × 0.7	6
	CF 4 FBR	CF 4 FB	CF 4 FBUUR	CF 4 FBUU	7.4	12	8	4	M 4 × 0.7	6
5	CF 5 BR	CF 5 B	CF 5 BUUR	CF 5 BUU	10.3	13	9	5	M 5 × 0.8	7.5
	CF 5 FBR	CF 5 FB	CF 5 FBUUR	CF 5 FBUU	10.3	13	9	5	M 5 × 0.8	7.5
6	CF 6 BR	CF 6 B	CF 6 BUUR	CF 6 BUU	18.5	16	11	6	M 6 × 1	8
	CF 6 FBR	—	CF 6 FBUUR	—	18.5	16	11	6	M 6 × 1	8
8	CF 8 BR	CF 8 B	CF 8 BUUR	CF 8 BUU	28.5	19	11	8	M 8 × 1.25	10
	CF 8 BRM	CF 8 BM	CF 8 BUURM	CF 8 BUUM	28.5	19	11	8	M 8 × 1	10
	CF 8 FBR	—	CF 8 FBUUR	—	28.5	19	11	8	M 8 × 1.25	10
10	CF 10 BR	CF 10 B	CF 10 BUUR	CF 10 BUU	45	22	12	10	M10 × 1.25	12
	CF 10 BRM	CF 10 BM	CF 10 BUURM	CF 10 BUUM	45	22	12	10	M10 × 1	12
	CF 10 FBR	—	CF 10 FBUUR	—	45	22	12	10	M10 × 1.25	12
	CF 10-1 BR	CF 10-1 B	CF 10-1 BUUR	CF 10-1 BUU	60	26	12	10	M10 × 1.25	12
CF 10-1 BRM	CF 10-1 BM	CF 10-1 BUURM	CF 10-1 BUUM	60	26	12	10	M10 × 1	12	
12	CF 12 BR	CF 12 B	CF 12 BUUR	CF 12 BUU	95	30	14	12	M12 × 1.5	13
	CF 12 FBR	—	CF 12 FBUUR	—	95	30	14	12	M12 × 1.5	13
	CF 12-1 BR	CF 12-1 B	CF 12-1 BUUR	CF 12-1 BUU	105	32	14	12	M12 × 1.5	13
16	CF 16 BR	CF 16 B	CF 16 BUUR	CF 16 BUU	170	35	18	16	M16 × 1.5	17
	CF 16 FBR	—	CF 16 FBUUR	—	170	35	18	16	M16 × 1.5	17
18	CF 18 BR	CF 18 B	CF 18 BUUR	CF 18 BUU	250	40	20	18	M18 × 1.5	19
	CF 18 FBR	—	CF 18 FBUUR	—	250	40	20	18	M18 × 1.5	19
20	CF 20 BR	CF 20 B	CF 20 BUUR	CF 20 BUU	460	52	24	20	M20 × 1.5	21
	CF 20 FBR	—	CF 20 FBUUR	—	460	52	24	20	M20 × 1.5	21
	CF 20-1 BR	CF 20-1 B	CF 20-1 BUUR	CF 20-1 BUU	385	47	24	20	M20 × 1.5	21
24	CF 24 BR	CF 24 B	CF 24 BUUR	CF 24 BUU	815	62	29	24	M24 × 1.5	25
	CF 24-1 BR	CF 24-1 B	CF 24-1 BUUR	CF 24-1 BUU	1140	72	29	24	M24 × 1.5	25
30	CF 30 BR	CF 30 B	CF 30 BUUR	CF 30 BUU	1 870	80	35	30	M30 × 1.5	32
	CF 30-1 BR	CF 30-1 B	CF 30-1 BUUR	CF 30-1 BUU	2 030	85	35	30	M30 × 1.5	32
	CF 30-2 BR	CF 30-2 B	CF 30-2 BUUR	CF 30-2 BUU	2 220	90	35	30	M30 × 1.5	32

Note(1) Minimum allowable value of chamfer dimension r
 Remarks 1. Models with a stud diameter d_1 of 4 mm or less have no oil hole. For models with a stud dia. 5 to 10mm, oil hole (re-greasing filling) is provided at the head. Other models are provided with an oil hole (grease nipple) at the head and an oil hole each on the outside surface and end surface of the stud.
 2. Shield type models with a stud diameter d_1 of 10mm or less and the sealed type models are provided with prepacked grease. Other models are not provided with prepacked grease. Perform proper lubrication for use.
 3. A nut is supplied with the stud.

Boundary dimensions mm										Mounting dimension f , mm	Maximum tightening torque, N·m	Basic dynamic load rating C , N	Basic static load rating C_0 , N	Maximum allowable static load, N
B	B_1	B_2	B_3	C_1	g_1	g_2	H	r_s (°) mm	Min. mm					
8	17	9	—	0.5	—	—	2	0.2	6.8	0.34	1 500	1 020	384	
8	17	9	—	0.5	—	—	2	0.2	6.8	0.34	1 200	813	384	
9	20	11	—	0.5	—	—	2.5	0.3	8.3	0.78	2 070	1 590	834	
9	20	11	—	0.5	—	—	2.5	0.3	8.3	0.78	1 650	1 270	834	
10	23	13	—	0.5	—	—	3	0.3	9.3	1.6	2 520	2 140	1 260	
10	23	13	—	0.5	—	—	3	0.3	9.3	1.6	1 930	1 730	1 260	
12.2max	28.2max	16	—	0.6	—	—	3	0.3	11	2.7	3 660	3 650	1 950	
12.2max	28.2max	16	—	0.6	—	—	3	—	11	2.7	2 930	2 920	1 950	
12.2max	32.2max	20	—	0.6	—	—	4	0.3	13	6.5	4 250	4 740	4 620	
12.2max	32.2max	20	—	0.6	—	—	4	0.3	13	7.1	4 250	4 740	4 620	
12.2max	32.2max	20	—	0.6	—	—	4	—	13	6.5	3 400	3 790	3 790	
13.2max	36.2max	23	—	0.6	—	—	4	0.3	16	13.8	5 430	6 890	6 890	
13.2max	36.2max	23	—	0.6	—	—	4	—	16	14.7	5 430	6 890	6 890	
13.2max	36.2max	23	—	0.6	—	—	4	—	16	13.8	4 340	5 510	5 510	
13.2max	36.2max	23	—	0.6	—	—	5	0.3	16	13.8	5 430	6 890	6 890	
13.2max	36.2max	23	—	0.6	—	—	4	0.3	16	14.7	5 430	6 890	6 890	
15.2max	40.2max	25	6	0.6	4	3	6	0.6	21	21.9	7 910	9 790	9 790	
15.2max	40.2max	25	6	0.6	4	3	6	—	21	21.9	6 330	7 830	7 830	
15.2max	40.2max	25	6	0.6	4	3	6	0.6	21	21.9	7 910	9 790	9 790	
19.6max	52.1max	32.5	8	0.8	4	3	6	0.6	26	58.5	12 000	18 300	18 900	
19.6max	52.1max	32.5	8	0.8	4	3	6	—	26	58.5	9 620	14 700	14 700	
21.6max	58.1max	36.5	8	0.8	6	3	8	—	29	86.2	14 800	25 200	25 200	
21.6max	58.1max	36.5	8	0.8	6	3	8	—	29	86.2	11 800	20 200	20 200	
25.6max	66.1max	40.5	9	0.8	6	4	8	1	34	119	20 700	34 600	34 600	
25.6max	66.1max	40.5	9	0.8	6	4	8	—	34	119	16 500	27 700	27 700	
25.6max	66.1max	40.5	9	0.8	6	4	8	1	34	119	20 700	34 600	34 600	
30.6max	80.1max	48.5	11	0.8	6	4	12	1	40	215	30 500	52 600	52 000	
30.6max	80.1max	48.5	11	0.8	6	4	12	1	40	215	30 500	52 600	52 000	
37 max	100 max	63	15	1	6	4	17	1	49	438	45 400	85 100	85 100	
37 max	100 max	63	15	1	6	4	17	1	49	438	45 400	85 100	85 100	
37 max	100 max	63	15	1	6	4	17	1	49	438	45 400	85 100	85 100	

1N=0.102kgf=0.2248lbs. 36
 1mm=0.03937inch