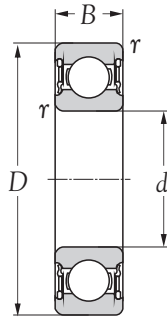
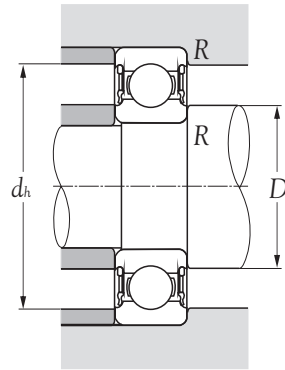


Ball bearings series 623..2RS



Sealed type
(2RS)



Boundary dimensions				Basic load ratings		Speed rating grease rpm	Bearing numbers	Abutment and fillet dimensions mm				Mass kg(s). (approx.)
mm				dynamic N	static			D_s min	D_s max	d_h max	R max	
d	D	B	$r_s min^1)$	C_o	C_{or}							
10	35	17	0.6	8060	3400	15000	62300 2RS	14.0	15.0	31.0	0.6	0.060
12	37	17	1.0	9750	4150	14000	62301 2RS	17.0	17.0	32.0	1.0	0.070
15	42	17	1.0	11400	5400	12000	62302 2RS	20.0	20.5	37.0	1.0	0.110
17	47	19	1.0	13500	6550	11000	62303 2RS	22.0	23.5	42.0	1.0	0.150
20	52	21	1.1	15900	7800	9500	62304 2RS	26.5	27.0	45.5	1.0	0.200
25	62	24	1.1	22500	11600	7500	62305 2RS	31.5	33.5	55.5	1.0	0.320
30	72	27	1.1	28100	16000	6300	62306 2RS	36.5	41.5	65.5	1.0	0.480
35	80	31	1.5	33200	19000	6000	62307 2RS	43.0	44.0	72.0	1.5	0.660
40	90	33	1.5	41000	24000	5000	62308 2RS	48.0	50.5	82.0	1.5	0.890
45	100	36	1.5	52700	31500	4500	62309 2RS	53.0	56.5	92.0	1.5	1.150
50	110	40	2.0	61800	38000	4300	62310 2RS	59.0	63.0	101.0	2.0	1.550

Note: 1) These values are the allowable minimum dimensions of the chamfer dimension r .

Remark: [Precision] - Class 0 (JIS)

[Cage] - Steel

[Grease] - Shell Alvania S2

If you require more individual technical information for each of above bearing model, please enter **KSM** web-site:

[Http://www.minamiguchi-bearings.com](http://www.minamiguchi-bearings.com), click into the bearing no., to obtain data sheet.